

# KR Electronics, Inc.

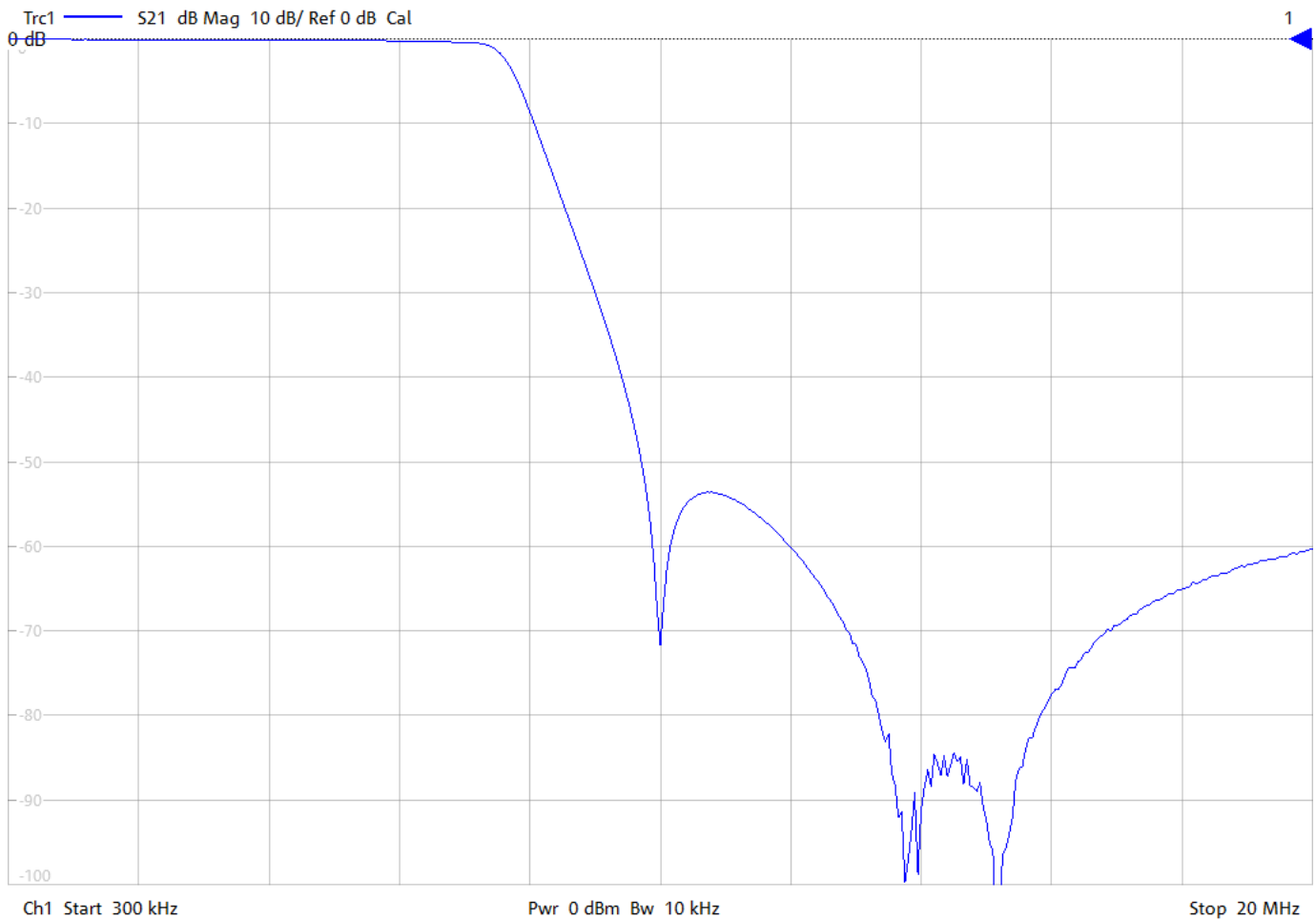
## General Description

KR Electronics part number 3400-SMA is a 7.5 MHz Low-pass filter. The filter has a minimum 3 dB bandwidth of 7.5 MHz. Other bandwidths are available. Please consult the factory.

### Features

- 7.5 MHz Lowpass Filter
- 3 dB Bandwidth 7.5 MHz max
- 40 dB Bandwidth 10 MHz max
- Sharp Elliptic Type Design
- 50  $\Omega$  Source and Load
- SMA Connectors
- Also available as surface mount

## Typical Performance



KR Electronics, Inc.  
91 Avenel Street  
Avenel, NJ 07001

Web [www.krfilters.com](http://www.krfilters.com)  
Email [sales@krfilters.com](mailto:sales@krfilters.com)  
Phone (732) 636-1900  
Fax (732) 636-1982

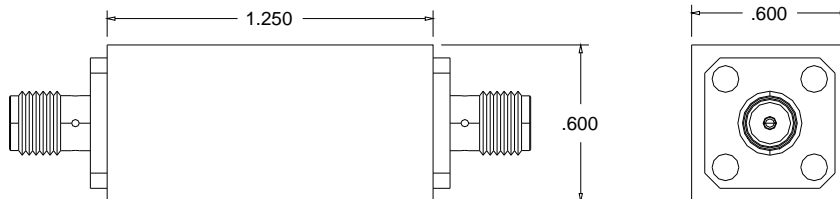
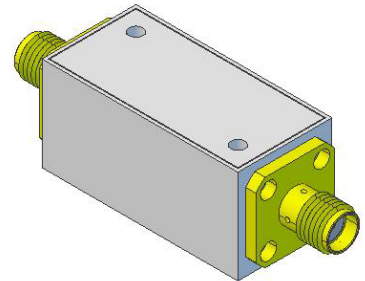
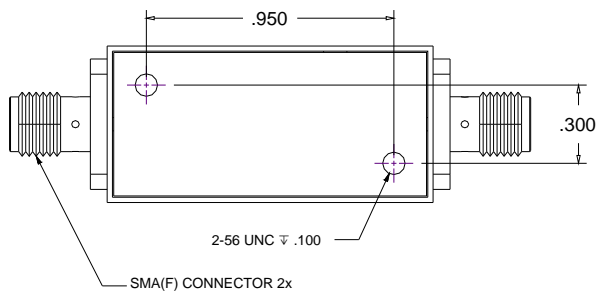


# KR Electronics 3400-SMA

## Specifications

Parameter	Specification	Notes
Filter type	Lowpass	
End of Passband < 3 dB	7.5 MHz	3 dB typical at 7.85 MHz
Rejection 10 MHz to 100 MHz	40 dB min	50 dB typical
Source and Load	50 Ω	

## Physical Dimensions



### Notes:

1. Dimensions in inches
2. Rectangular case
3. Also available in surface mount package

KR Electronics, Inc.  
91 Avenel Street  
Avenel, NJ 07001

Web [www.krfilters.com](http://www.krfilters.com)  
Email [sales@krfilters.com](mailto:sales@krfilters.com)  
Phone (732) 636-1900  
Fax (732) 636-1982