

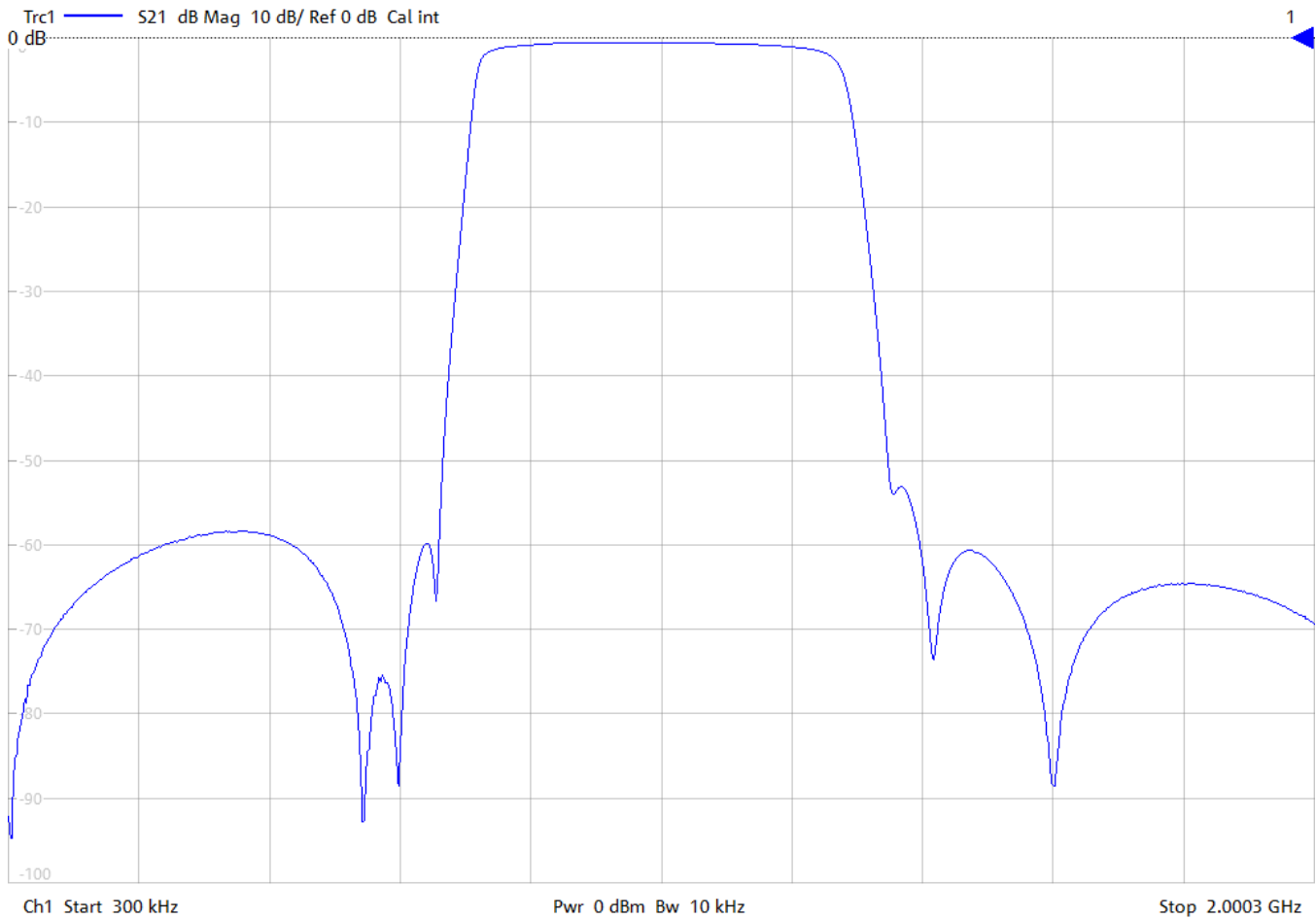
## General Description

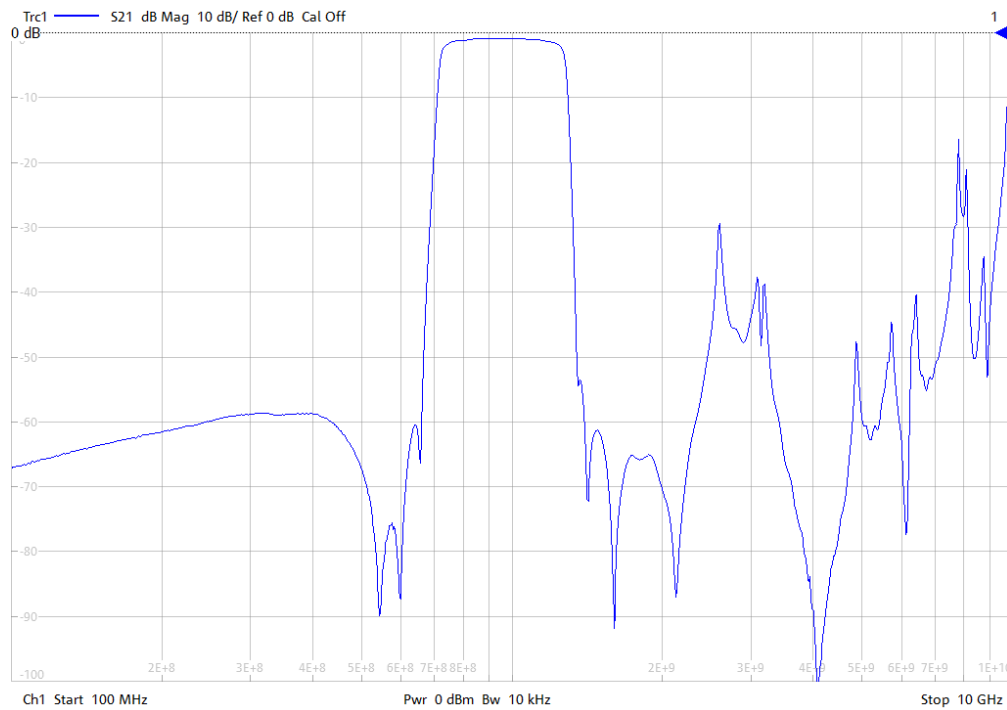
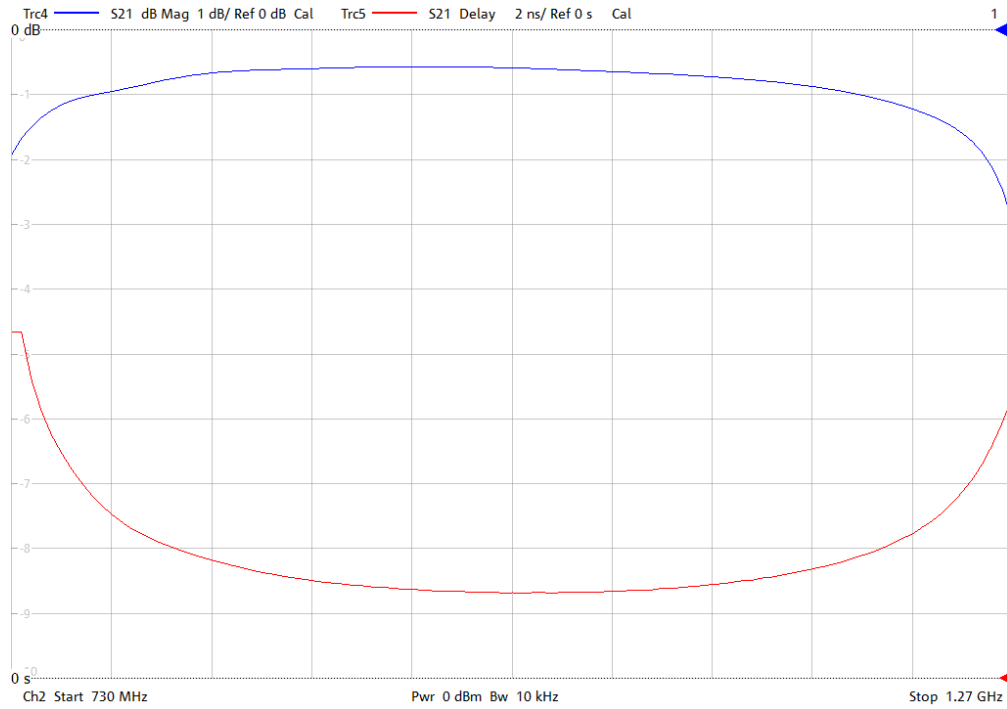
KR Electronics part number 3409-SMA is a 1000 MHz bandpass filter. The filter has a minimum 3 dB bandwidth of 540 MHz. Other center frequencies and are bandwidths available. Please consult the factory.

### Features

- 1000 MHz Bandpass
- 3 dB Bandwidth 540 MHz min
- Sharp Elliptic Type Design
- 50  $\Omega$  Source and Load
- SMA Connectors
- Surface Mount Available

## Typical Performance





KR Electronics, Inc.  
 91 Avenel Street  
 Avenel, NJ 07001

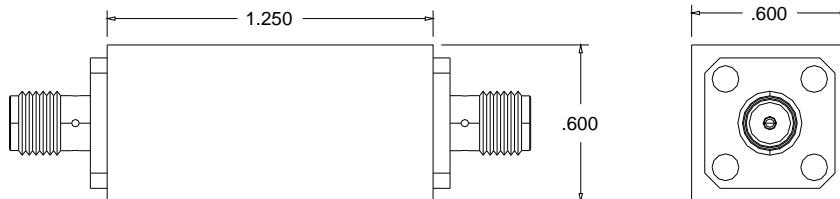
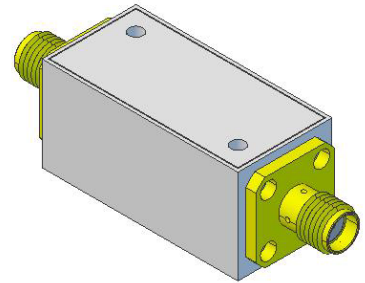
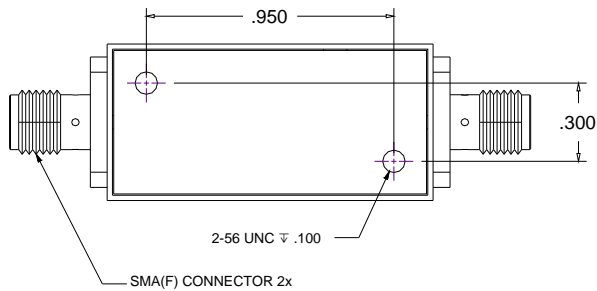
Web www.krfilters.com  
 Email sales@krfilters.com  
 Phone (732) 636-1900  
 Fax (732) 636-1982

# KR Electronics 3409-SMA

## Specifications

Parameter	Specification	
Filter type	Bandpass	
Center Frequency	1000 MHz	
Insertion Loss	1.5 dBA max	0.6 dBA typical
3 dBc Bandwidth	540 MHz min	
Rejection at 650 MHz & below	50 dBc min	
Rejection at 1350 MHz to 2000 MHz	50 dBc min	
Source and Load	50 $\Omega$	

## Physical Dimensions



**Notes:**

1. Dimensions in inches
2. Metal Case
3. SMA(F) Connectors
4. Also available in surface mount package

KR Electronics, Inc.  
91 Avenel Street  
Avenel, NJ 07001

Web [www.krfilters.com](http://www.krfilters.com)  
Email [sales@krfilters.com](mailto:sales@krfilters.com)  
Phone (732) 636-1900  
Fax (732) 636-1982