

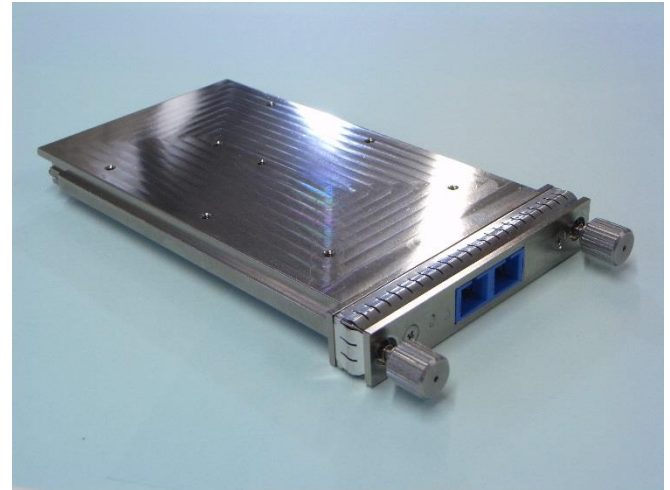
100Gb/s CFP Optical Transceiver Module

SCF1001/1011E4 Series

(100GBASE-ER4, ITU-T OTU-4, 1300nm 4-lane WDM, EML, PIN-PD, SOA, 40km)

Features

- ◆ 4-lane x 25.78Gb/s L-WDM Optical Interface
 - High quality and reliability optical sub-assemblies
 - 1300nm Cooled WDM 800GHz spacing LAN WDM grid up to 40km over a SMF
 - High Sensitivity PIN-TIA with optical DEMUX
 - Low noise and low distortion SOA
- ◆ IEEE802.3ba Compliant
 - IEEE802.3 Clause 88 100GBASE-ER4
 - CAUI(10x10G) Electrical Interface
 - MDIO Interface for module management
- ◆ OTU-4 Rate Operation (SCF1011E4 only)
 - 4 x 27.95 Gb/s lane operation to support OTU-4
 - ITU-T 4L1-9C1F compatible 40km Optical I/F Option Available
- ◆ CFP MSA Compliant
 - Easy supply management for hot pluggability
 - CFP MSA Form Factor
 - 148pin Electrical Connector
 - Duplex SC or LC Receptacle
- ◆ Power Supply
 - 3.3V single power supply
- ◆ RoHS6 Compliant



Applications

- 100GE Enterprise switches and routers
- Carrier Grade 100GE Core-routers
- Point to Point and Ring Application
- Inter Rack Connection
- Other high speed data connections

