

DESCRIPTION

PMI MODEL: LM-218-14-200W-SFF-OPT10M20G-SMT IS A HIGH POWER LIMITER OPERATING OVER THE 10 MHz TO 20.0 GHz FREQUENCY RANGE. THIS MODEL HANDLES 200 W PEAK POWER WITH A PULSE WIDTH OF 1 μ s AND 0.1% DUTY CYCLE OR 1 WATT CW. THIS LIMITER IS SUPPLIED MOUNTED IN A TEST FIXTURE.

SPECIFICATIONS

- * FREQUENCY RANGE: ----- 10 MHz TO 20.0 GHz
- * INSERTION LOSS: ----- 2.0 dB MAXIMUM @ Pin = - 10 dBm
- * PEAK POWER: ----- 20 WATTS, 1 μ s PULSE WIDTH & 0.1% DUTY CYCLE
- * AVERAGE POWER: ----- 1 WATT CW
- * VSWR: ----- 2.0:1 MAXIMUM
- * LEAKAGE LEVEL: ----- +14 dBm MAXIMUM @ 1 WATT CW
- * LOW LIMITING THRESHOLD: ----- +6 dBm TYPICAL
- * RECOVERY TIME: ----- 100 ns MAXIMUM @ Pin = 27 dBm
- * TEST FIXTURE CONNECTORS: ----- SMA FEMALE
- * SIZE: ----- [L] 0.270" x [W] 0.198" x [H] 0.016" WITHOUT CARRIER
[L] 1.200" x [W] 0.698" x [H] 0.200" INSIDE TEST FIXTURE*

*TEST FIXTURE PROVIDED WITH THE UNIT

ENVIRONMENTAL RATINGS

- * TEMPERATURE: ----- -55 °C TO +125 °C (OPERATING)*
-65 °C TO +125 °C (STORAGE)
- * HUMIDITY: ----- MIL-STD-202, METHOD 103B COND. B
- * SHOCK: ----- MIL-STD-202, METHOD 213B COND. B
- * VIBRATION: ----- MIL-STD-202, METHOD 204D COND. B
- * ALTITUDE: ----- MIL-STD-202, METHOD 105C COND. B
- * TEMPERATURE CYCLE: ----- MIL-STD-202, METHOD 107D COND. A

* - POWER HANDLING CAPABILITY DERATED BY 20% @ +125°C

NOTE: SPECIFICATIONS WILL VARY OVER OPERATING TEMPERATURE

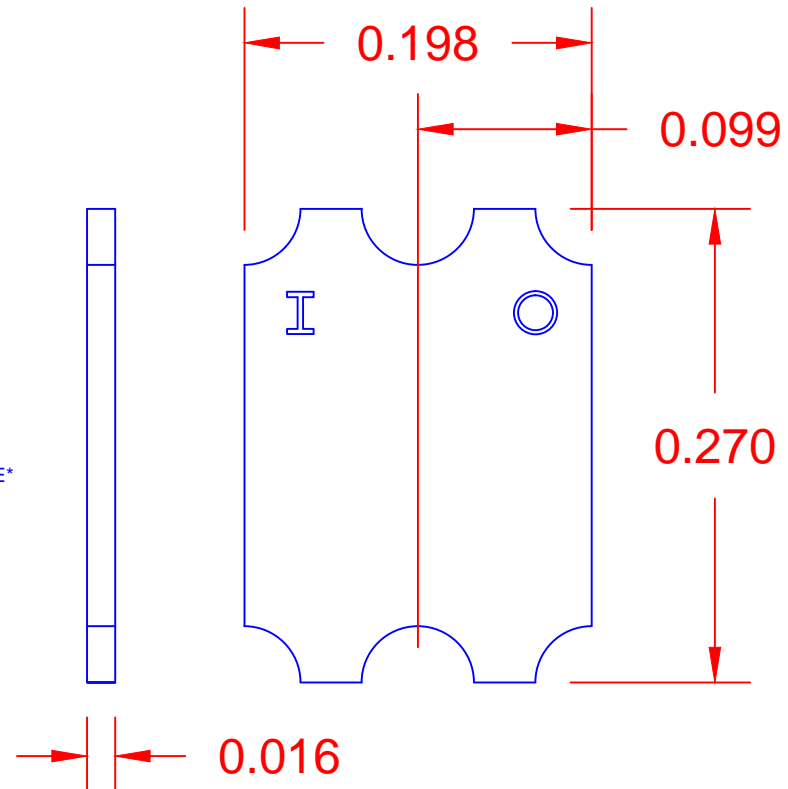
NOTE: THE ABOVE SPECIFICATIONS ARE SUBJECT TO CHANGE OR REVISION

ALL DIMENSIONS
ARE IN INCHES (mm)
TOLERANCES:
X.XX \pm 0.020
X.XXX \pm 0.010

PMI CONFIDENTIAL AND PROPRIETARY

REVISIONS				
ZONE	REV.	DESCRIPTION	DATE	APPROVED
	-	PRELIMINARY	2/11/2016	

MECHANICAL OUTLINE



PLANAR MONOLITHICS INDUSTRIES, INC.

7311-F GROVE ROAD

FREDERICK, MARYLAND 21704 USA

TEL: (301)-662-5019, FAX: (301)-662-1731

WEB: www.pmi-rf.com, EMAIL: sales@pmi-rf.com

ISO 9001 CERTIFIED



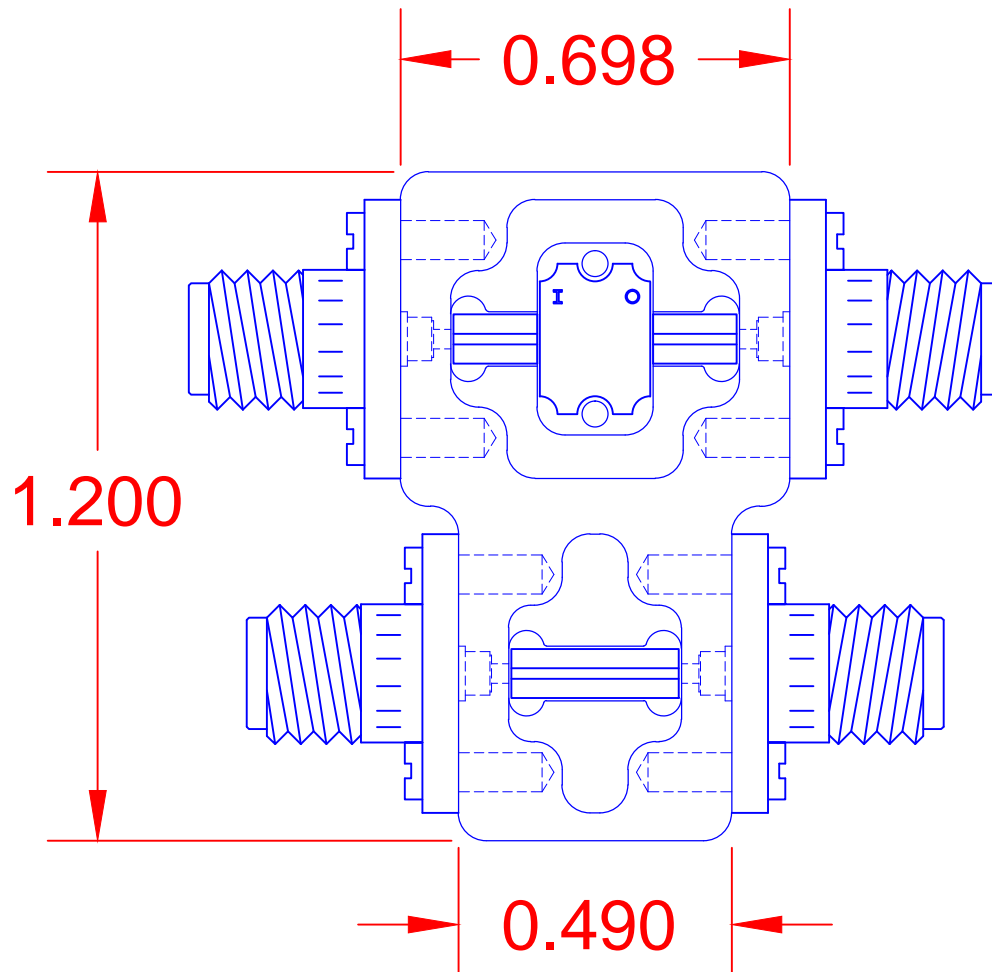
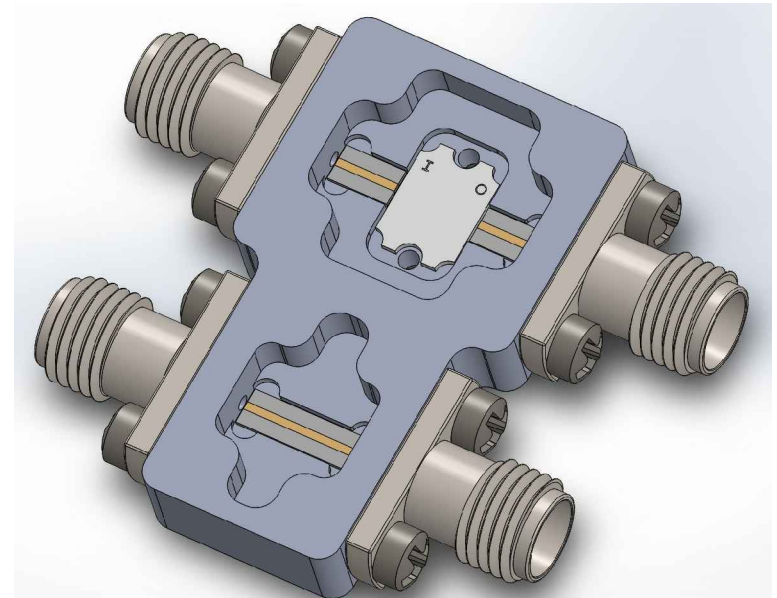
APPROVALS		DATE	TITLE		
DRAWN			PRODUCT FEATURE LM-218-14-200W-SFF-OPT10M20G-SMT		
CHECKED					
ISSUED			SIZE	FSCM NO.	DWG NO.
			A	05XQ0	PRELIMINARY
			SCALE	N:S	SHEET
					1 OF 2

DESCRIPTION

PMI MODEL: LM-218-14-200W-SFF-OPT10M20G-SMT IS A HIGH POWER LIMITER OPERATING OVER THE 10 MHz TO 20.0 GHz FREQUENCY RANGE. THIS MODEL HANDLES 200 W PEAK POWER WITH A PULSE WIDTH OF 1 μ s AND 0.1% DUTY CYCLE OR 1 WATT CW. THIS LIMITER IS SUPPLIED MOUNTED IN A TEST FIXTURE.

REVISIONS				
ZONE	REV.	DESCRIPTION	DATE	APPROVED
	-	PRELIMINARY	2/11/2016	

MECHANICAL OUTLINE



ALL DIMENSIONS
ARE IN INCHES (mm)
TOLERANCES:
X.XX ±0.020
X.XXX ±0.010

PMI CONFIDENTIAL AND PROPRIETARY

PLANAR MONOLITHICS INDUSTRIES, INC.

7311-F GROVE ROAD

FREDERICK, MARYLAND 21704 USA

TEL: (301)-662-5019, FAX: (301)-662-1731

WEB: www.pmi-rf.com, EMAIL: sales@pmi-rf.com

ISO 9001 CERTIFIED



APPROVALS		DATE		TITLE	
DRAWN		M. Berry		02/11/16	
CHECKED					
ISSUED					
SIZE	A	FSCM NO.	05XQ0	DWG NO.	PRELIMINARY
SCALE	N:S			SHEET	2 OF 2