

DESCRIPTION

PMI MODEL PDPS-5F-6, IS A SIX BIT PHASE SHIFTER WITH A SPEED OF 300 nSEC MAXIMUM, (100 nSEC TYPICAL). DESIGNED TO OPERATE AT A FREQUENCY OF 5.4 TO 5.9 GHz, WITH A VSWR OF 2.0:1. THIS UNIT HAS AN INSERTION LOSS OF 6.5 dB MAXIMUM AND A PHASE ACCURACY OF $\pm 6^\circ$ MAXIMUM, 3° TYPICAL.

SPECIFICATIONS

- FREQUENCY RANGE: 5.4 TO 5.9 GHz
- INSERTION LOSS: 6.5 dB MAXIMUM
- VSWR: 2.0:1
- PHASE STATES: 5.6° , 11.2° , 22.4° , 45° , 90° , 180°
- PHASE ACCURACY: $\pm 6^\circ$ MAXIMUM, 3° TYPICAL
- SWITCHING SPEED: 300nSEC MAXIMUM, 100nSEC TYPICAL
- POWER SUPPLY: +5V @ 50 mA MAXIMUM
..... -15V @ 50 mA MAXIMUM
- CONNECTORS:
RF: SMA FEMALE INPUT & OUTPUT
CONTROL: TTL THRU "D" MULTIPIN CONNECTOR
- SIZE: 3.00" X 2.70" X 0.50"

15 Pin Sub-D Connector Pin Out	
Pin 1	TTL CONTROL 180° MSB
Pin 2	TTL CONTROL 90°
Pin 3	TTL CONTROL 45°
Pin 4	TTL CONTROL 22.5°
Pin 5	TTL CONTROL 11.25°
Pin 6	TTL CONTROL 5.6° LSB
Pin 7	(+5VDC)
Pin 8	(-15VDC)
Pin 9	P.S. RETURN (CASE GROUND)
Pin 10-15	TTL RETURN (CASE GROUND)

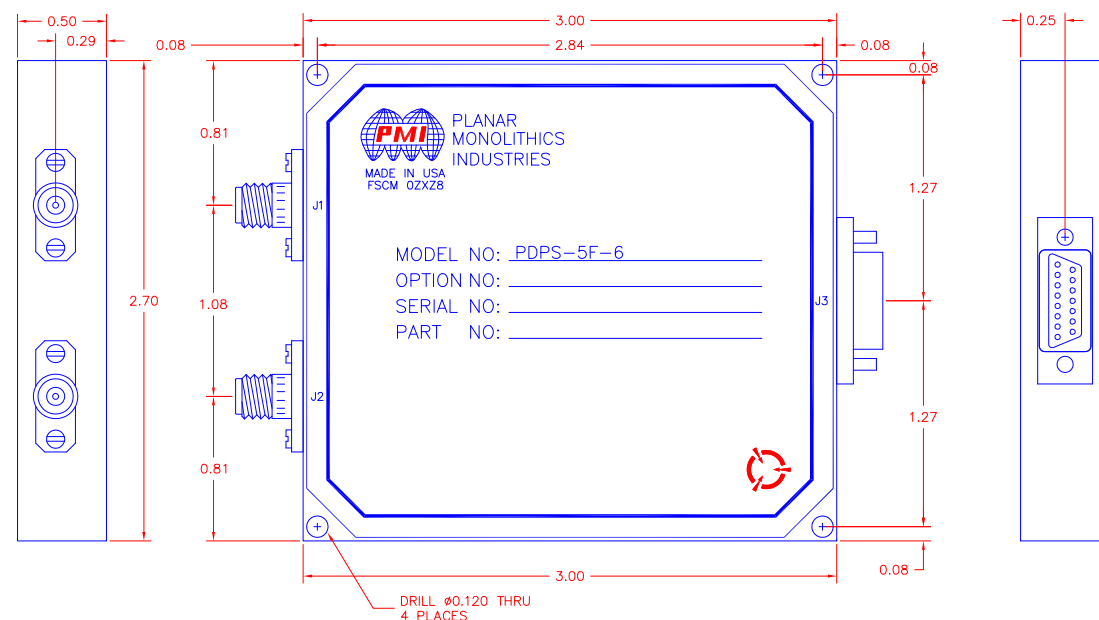
ENVIRONMENTAL RATINGS:

- TEMPERATURE: -40°C TO $+85^\circ\text{C}$ (OPERATING)
..... -65°C TO $+100^\circ\text{C}$ (STORAGE)
- HUMIDITY: MIL-STD-202F, METHOD 103B COND. B
- SHOCK: MIL-STD-202F, METHOD 213B COND. B
- VIBRATION: MIL-STD-202F, METHOD 204D COND. B
- ALTITUDE: MIL-STD-202F, METHOD 105C COND. B
- TEMPERATURE CYCLE: MIL-STD-202F, METHOD 107D COND. A

NOTE: SPECIFICATIONS WILL VARY OVER OPERATING TEMPERATURE
NOTE: THE ABOVE SPECIFICATIONS ARE SUBJECT TO CHANGE OR REVISION

ALL DIMENSIONS ARE IN INCHES
TOLERANCES:
X.XX ± 0.020
X.XXX ± 0.010

REVISIONS			
ZONE	REV.	DESCRIPTION	DATE
	-	SEE ECR# P07-010	05/08/07



PLANAR MONOLITHICS INDUSTRIES, INC.

7311-F GROVE ROAD
FREDERICK, MARYLAND 21704 USA
TEL: 301-631-1579 FAX: 301-662-2029
WEBSITE: www.pmi-rf.com
E-MAIL: sales@pmi-rf.com
ISO 9001:2008 CERTIFIED

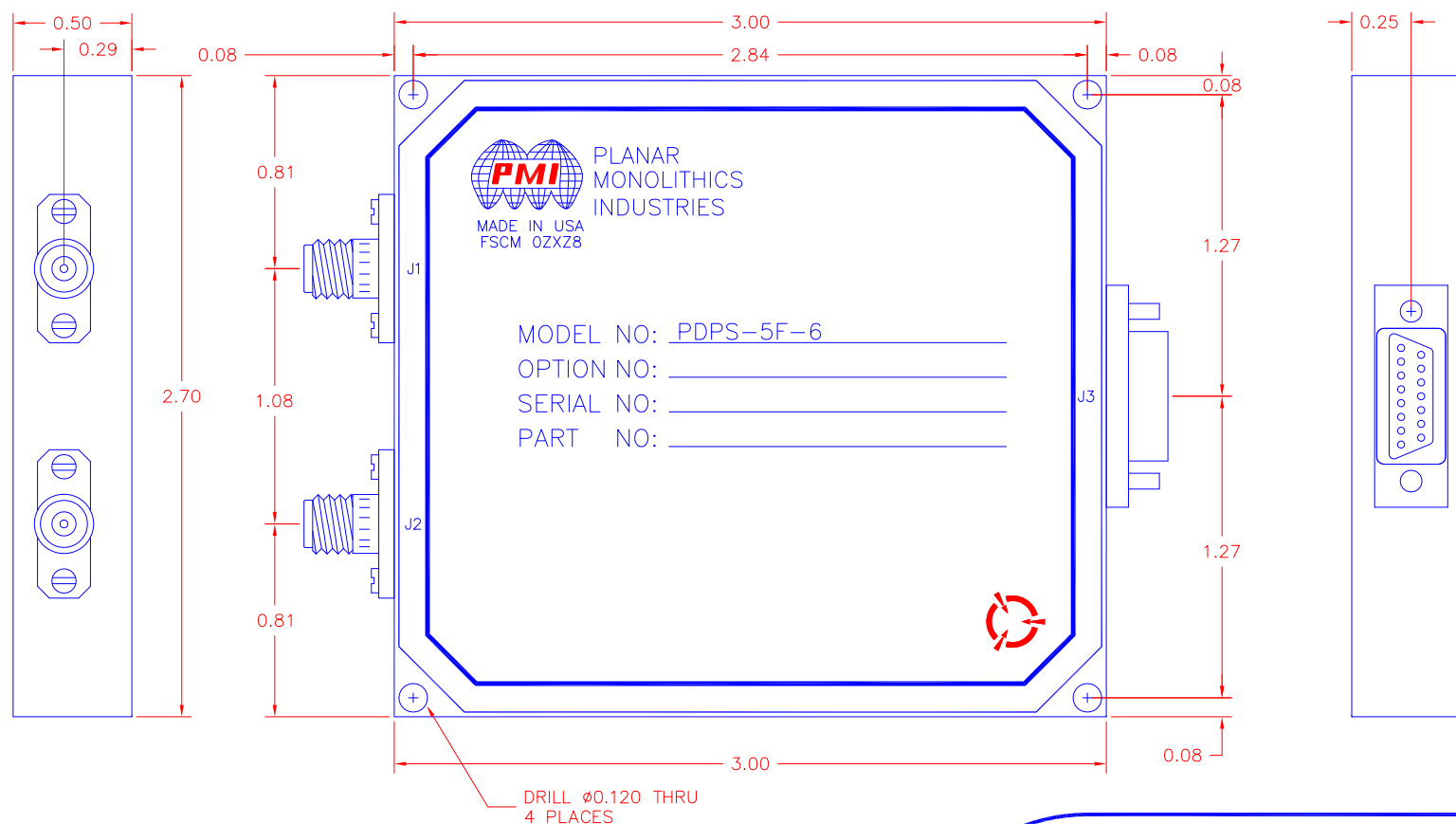


APPROVALS		DATE		TITLE			
DRAWN		05/08/07		PRODUCT FEATURE			
CHECKED				PDPS-5F-6			
ISSUED				5.4 - 5.9 GHz, 6-BIT PHASE SHIFTER			
				SIZE	FSCM NO.	DWG NO.	REV.
				A	05XQ0	100-P001-000	-
				SCALE N:S		SHEET 1 OF 3	

DESCRIPTION

PMI MODEL PDPS-5F-6, IS A SIX BIT PHASE SHIFTER WITH A SPEED OF 300 nSEC MAXIMUM, (100 nSEC TYPICAL). DESIGNED TO OPERATE AT A FREQUENCY OF 5.4 TO 5.9 GHz, WITH A VSWR OF 2.0:1. THIS UNIT HAS AN INSERTION LOSS OF 6.5 dB MAXIMUM AND A PHASE ACCURACY OF $\pm 6^\circ$ MAXIMUM, 3° TYPICAL.

REVISIONS			
ZONE	REV.	DESCRIPTION	DATE
	—	SEE ECR# P07-010	05/08/07
APPROVED			



MECHANICAL OUTLINE

ALL DIMENSIONS ARE IN INCHES
TOLERANCES:
X.XX ± 0.020
X.XXX ± 0.010

PLANAR MONOLITHICS INDUSTRIES, INC.

7311-F GROVE ROAD
FREDERICK, MARYLAND 21704 USA
TEL: 301-631-1579 FAX: 301-662-2029
WEBSITE: www.pmi-rf.com
E-MAIL: sales@pmi-rf.com
ISO 9001:2008 CERTIFIED



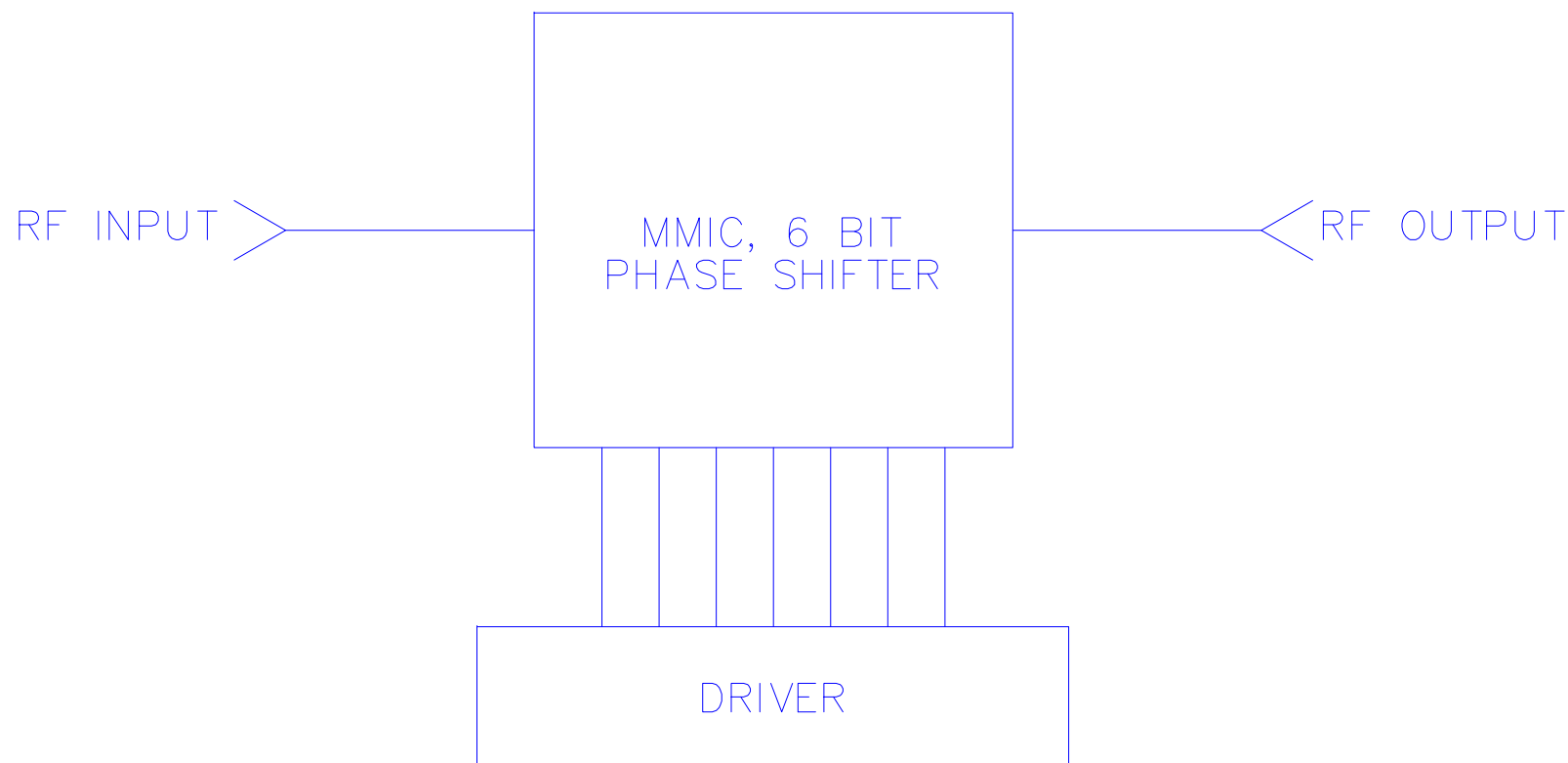
APPROVALS		DATE		TITLE			
DRAWN		05/08/07		MECHANICAL OUTLINE			
CHECKED				PDPS-5F-6			
ISSUED				5.4 - 5.9 GHz, 6-BIT PHASE SHIFTER			
				SIZE	FSCM NO.	DWG NO.	REV.
				A	05XQ0	100-P001-000	—
				SCALE	N:S	SHEET 2 OF 3	

DESCRIPTION

PMI MODEL PDPS-5F-6, IS A SIX BIT PHASE SHIFTER WITH A SPEED OF 300 nSEC MAXIMUM, (100 nSEC TYPICAL). DESIGNED TO OPERATE AT A FREQUENCY OF 5.4 TO 5.9 GHz, WITH A VSWR OF 2.0:1. THIS UNIT HAS AN INSERTION LOSS OF 6.5 dB MAXIMUM AND A PHASE ACCURACY OF $\pm 6^\circ$ MAXIMUM, 3° TYPICAL.

REVISIONS				
ZONE	REV.	DESCRIPTION	DATE	APPROVED
	-	SEE ECR# P07-010	05/08/07	

FUNCTIONAL BLOCK DIAGRAM



CONFIDENTIAL AND PROPRIETARY

PLANAR MONOLITHICS INDUSTRIES, INC.

7311-F GROVE ROAD
FREDERICK, MARYLAND 21704 USA
TEL: 301-631-1579 FAX: 301-662-2029
WEBSITE: www.pmi-rf.com
E-MAIL: sales@pmi-rf.com
ISO 9001:2008 CERTIFIED



APPROVALS		DATE	TITLE			
DRAWN		WFLS	FUNCTIONAL BLOCK DIAGRAM			
CHECKED			PDPS-5F-6			
ISSUED			5.4 - 5.9 GHz, 6-BIT PHASE SHIFTER			
SIZE	FSCM NO.	DWG NO.	REV.			
A	05XQ0	100-P001-000	-			
SCALE		N:S	SHEET		3 OF 3	