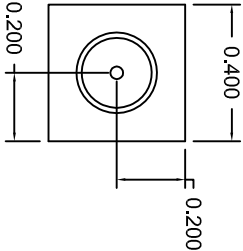


DESCRIPTION:

PFC model number 5C12D9G-180-CD-SFF is a Combine filter with SMA female connectors in and out. All filters will be machined and silver plated to provide the highest possible Q.

SPECIFICATIONS:

- CENTER FREQUENCY: 12900 MHz
- 3dB BANDWIDTH: 180 MHz
- VSWR IN THE PASS BAND: 1.5:1 MAX.
- INSERTION LOSS (PASSBAND) <= 2 dB MAX.
- REJECTION: 5 POLE RESPONSE
- CONNECTORS: SMA FEMALE CONNECTORS
- SIZE: 1.90" (L) x 0.40" (W) x 0.40" (H)
- WEIGHT: 1 OZ. TYP.



ENVIRONMENTAL RATINGS:

- TEMPERATURE: -55°C TO +85°C (OPERATING), -65°C TO +125°C (STORAGE)
- HUMIDITY: MIL-STD-202F, METHOD 103B COND. B
- SHOCK: MIL-STD-202F, METHOD 213B COND. B
- VIBRATION: MIL-STD-202F, METHOD 204D COND. B
- ALTITUDE: MIL-STD-202F, METHOD 105C COND. B
- SALT FOG: MIL-STD-202F, METHOD 107D COND. A
- FUNGUS: MIL-STD-810C, METHOD 508.2
- TEMPERATURE CYCLE: MIL-STD-202F, METHOD 107


NOTE: THE ABOVE SPECIFICATIONS ARE SUBJECT TO CHANGE OR REVISION

REVISIONS			
ZONE	REV.	DESCRIPTION	DATE
	-	ORIGINAL RELEASE	01/16/02
A		Change specs	2/7/02

VIEW FORM TOP

VIEW FORM BOTTOM

CONFIDENTIAL AND PROPRIETARY

PART NO. 155-1137				Planar Filter Company 7311 G Grove Road, Fredrick, Maryland	
APPROVALS		DATE		TITLE	
DRAWN RLB		01/16/02		PRODUCT FEATURE	
CHECKED				5C12D9G-180-CD-SFF	
ISSUED		SIZE FSCM NO. A 1QJWO		DWG NO. 155-1137	
TOLERANCES: X.XX ±0.010 X.XXX ±0.005		SCALE N/S		SHEET 1 of 1	