

| CATALOG # | "A" DETENT |
|----------------|----------------|
| 00219-215-3-SB | SMOOTH BORE |
| 00219-215-3-LD | LIMITED DETENT |
| 00219-215-3-FD | FULL DETENT |

OCS PLM CONTROLLED

| REV. | DESCRIPTION | DATE | BY |
|------|------------------|---------|-----|
| F | SEE ECO GM-11572 | 4/19/00 | MJC |

MATERIAL AND FINISH

HOUSING, SHROUD,
AND COUPLING NUT:

CRES 303 PER ASTM A 484
AND ASTM A 582 OR ASTM A 555
AND ASTM A 581. PASSIVATE PER
MIL-F-14072 E300.

HOUSING ADAPTOR
AND CONTACT:

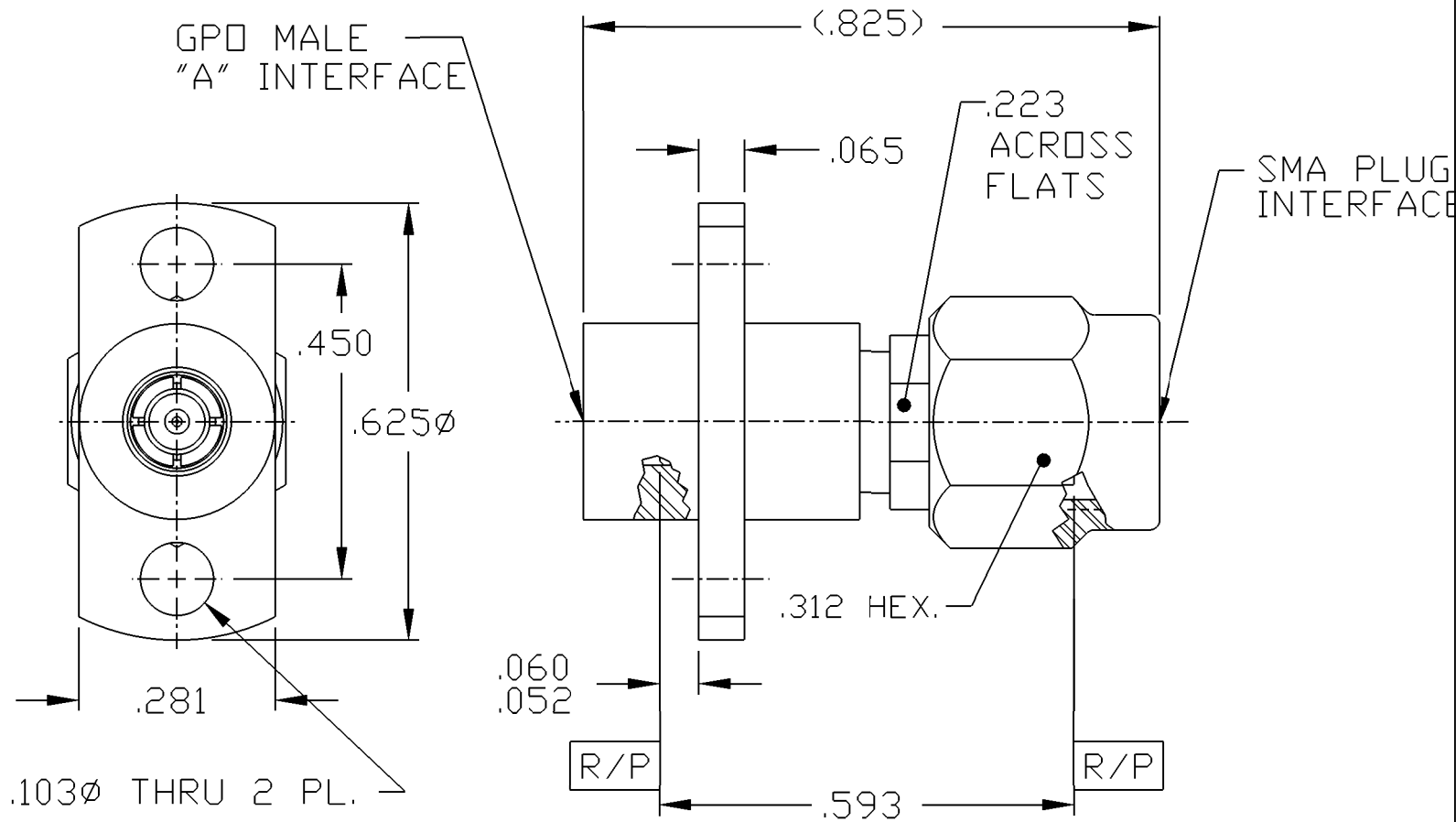
BERYLLIUM COPPER PER ASTM
B 196 AND/OR ASTM B 197.
GOLD PLATE PER MIL-G-45204;
TYPE I, GRADE C, CLASS 1.
OVER NICKEL PER QQ-N-290A;
CLASS 1; 50 MICRONS MIN.

DIELECTRICS:

VIRGIN PTFE FLUOROCARBON PER
ASTM D 1710 AND ASTM D 1457.

RETAINING RING:

BERYLLIUM COPPER PER ASTM
B 196 AND/OR ASTM B 197.



| | | | | | | |
|--|---------------|-------------|------------------------------------|-----------------|--|--------------------------------|
| This drawing and any data contained therein is the property of Gilbert Engineering Co., Inc. and constitutes and contains proprietary and confidential information. Neither receipt nor possession of this drawing confers or transfers any right to duplicate, use or disclose any information contained herein except as expressly authorized by Gilbert Engineering Co., Inc. | | | ALL DIMENSIONS IN INCHES | | CATALOG NUMBER 00219-215-3-TAB | CODE IDENT NO. 82316 |
| DRAWN: DES DATE | | | GILBERT ENGINEERING CO., INC. | | | |
| TITLE OUTLINE DRAWING FOR GPO MALE (TAB DETENT) 2 HOLE FLANGE MOUNT TO SMA PLUG ADAPTOR | | | | | | |
| ASSEMBLY PROCEDURES: NONE | | | 12/3/92 | | | |
| SOURCE FILE: SK-1014 | SHT. 1 | OF 1 | DWG. NO. OL-00219-215-3-TAB | REV F | | |