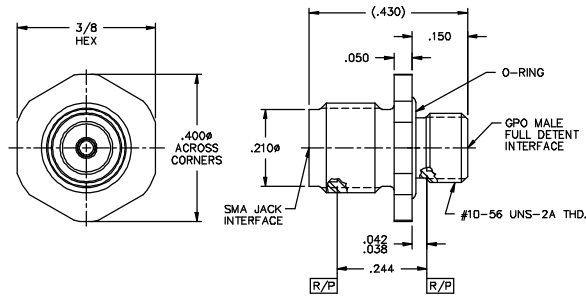
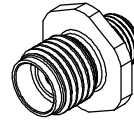


DATE REVISED: 9/21/97

CATALOG NUMBER
00219-116-3

MATERIAL AND FINISH

HOUSING: CRES 303; PASSIVATED
 CENTER CONTACT: BeCu; GOLD PLATE 50-100 MICRONS
 OVER NICKEL PLATE 50 MICRONS MIN.
 DIELECTRICS: VIRGIN PTFE
 O-RING: SILICONE RUBBER



This drawing and any data contained herein is the property of Corning Gilbert Inc., and constitutes and contains proprietary and confidential information. Neither receipt nor possession of this drawing confers or transfers any right to duplicate, use or disclose any information contained herein except as expressly authorized by Corning Gilbert Inc.

GPO MALE FULL DETENT TO SMA JACK THREAD-IN ADAPTER		IDENT CODE: 82316	Corning Gilbert Inc.
		REVISION: C	
SOURCE FILE: MECR# 953	DWG. NO.: OL-00219-116-3	ASSY. PROC.: -	