

REVISED		DATE	APPROVED
ZONE	REL	DESCRIPTION	
A		ORIGINAL RELEASE	12/18/10

Description:

Part Number 27006122(Model Number PE2-20-818-4R0-15-12-SFF) is a 8 to 18 GHz low noise amplifier. This amplifier is supplied in our standard PE2 housing that can be used as a SMA connectorized or a surface mount component.

This model provides the following performance. Data is available upon request.

Specifications:

Frequency Range:	8 to 18 GHz
Gain:	20dB Typ.
Gain Flatness:	+/- 1.0dB Max.
Noise Figure:	4.0dB Max.
OP1dB:	+12dBm Min.
VSWR Input/Output:	2.0:1 Max.
DC Voltage Supply:	+12 to +15VDC
DC Current Draw:	180mA Max.
Connectors In/Out	SMA Female

Features:

- Internal Voltage Regulation
- Unconditional Stability
- Standard Operating Temperature -55 to +85 Deg. C

Available Options:

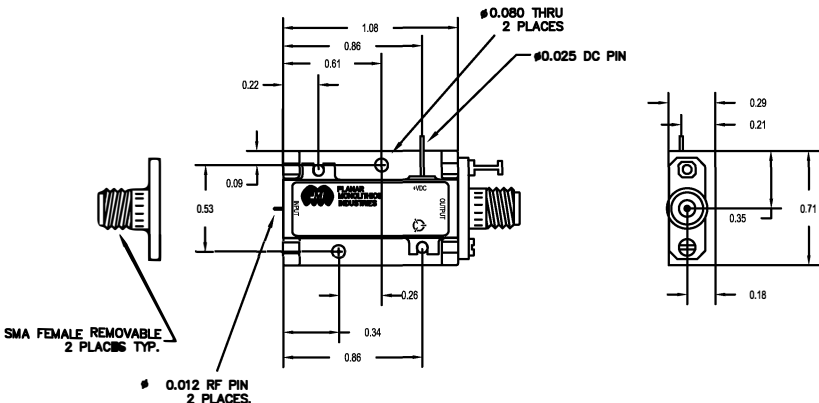
- Various Package types
- Various Connector types
- Temperature Compensation
- Gain and Phase Matching
- MIL-STD-883 Screening Available

Environmental Ratings:

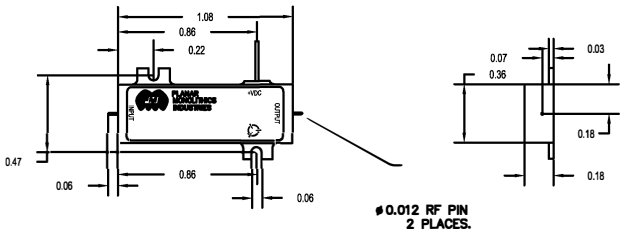
Temperature:	-55 to +85 Deg. C (Operating)
	-65 to +125 Deg. C (Storage)
Humidity:	MIL-STD-202F, METHOD 103B COND B.
Shock:	MIL-STD-202F, METHOD 213B COND B.
Altitude:	MIL-STD-202F, METHOD 105C COND B.
Temperature Cycle:	MIL-STD-202F, METHOD 107D COND A

Note: The above specifications are subject to change or revision.


PE2 HOUSING WITH CARRIER



PE2 HOUSING WITHOUT CARRIER (SURFACE MOUNT)



UNLESS OTHERWISE SPECIFIED
DIMENSIONS ARE IN INCHES
TOLERANCES ARE:
FRACTIONS DECIMALS ANGLES
± .XX ± 0.010 ±
XXX ± 0.005

PART NO.				7311-F GROVE ROAD FREDERICK, MARYLAND	
APPROVALS		DATE			
DESIGN		DPD		3/9/10	
MATERIAL:		SFK		12/18/10	
ROB1-TR Aluminum					
FINISH:					
GOLD PLATED					
DO NOT SCALE DRAWING					
		REV		DATE	
		B		05XQA	
		DRAW N/A		27006122	
		SHEET		1 OF 1	