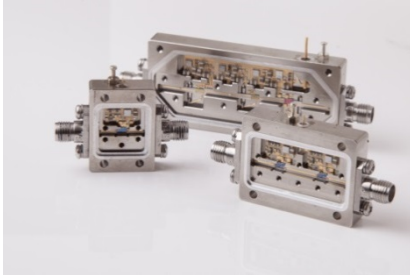


Medium Power RF Amplifier

Frequency Range: 650 MHz to 750 MHz



Features

- High Output Power: +33 dBm
- High Linearity: +75 dBm (IP2)
- EAR99
- Unconditionally Stable

Model BXMP1256 is a high performance medium power amplifier covering a wide 650 MHz – 750 MHz bandwidth. This design also offers excellent linearity, excellent output power coupled with a laser welded housing for the ultimate in environmental protection. This standard model may also be modified or customized in order to optimize any one particular parameter. All specification ratings are based on measurements in a 50 Ω (ohm) system with a DC supply voltage tolerance of +/- 2%.

Technical Specifications

Parameter	Typical 25°C	Min/Max 0°C to +50°C
Frequency Range	650 MHz – 750 MHz	650 MHz – 750 MHz
Gain	26	25
Noise Figure	5.0	6.0
Output Power @ 1 dB Compression	+33	+32
Output 3 rd Order Intercept	+50	---
Output 2 nd Order Intercept	+75	---
Reverse Isolation	40	---
Input VSWR	1.5:1	2.0:1
Output VSWR	1.5:1	2.0:1
Supply Voltage	+18	+18
Supply Current	850	875

Maximum Ratings

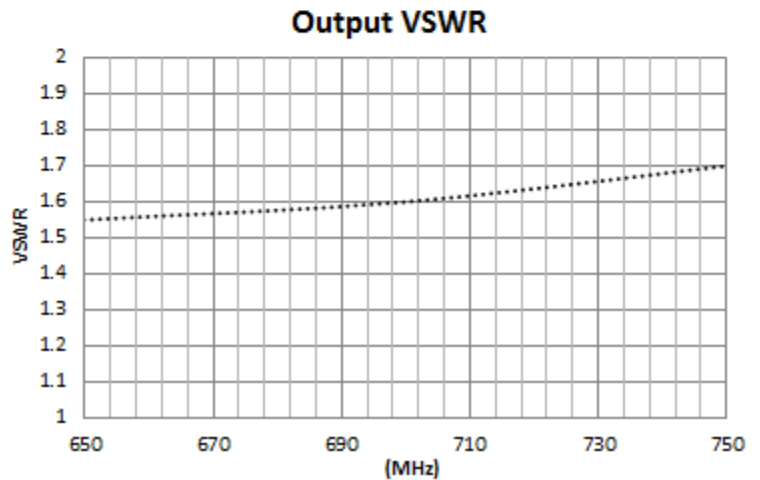
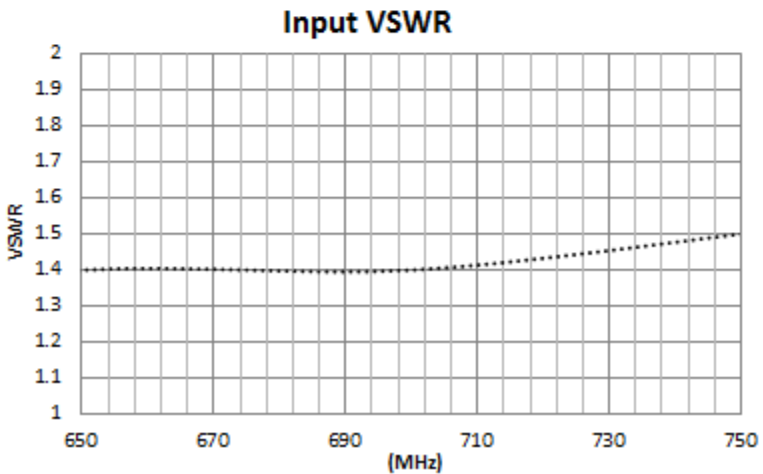
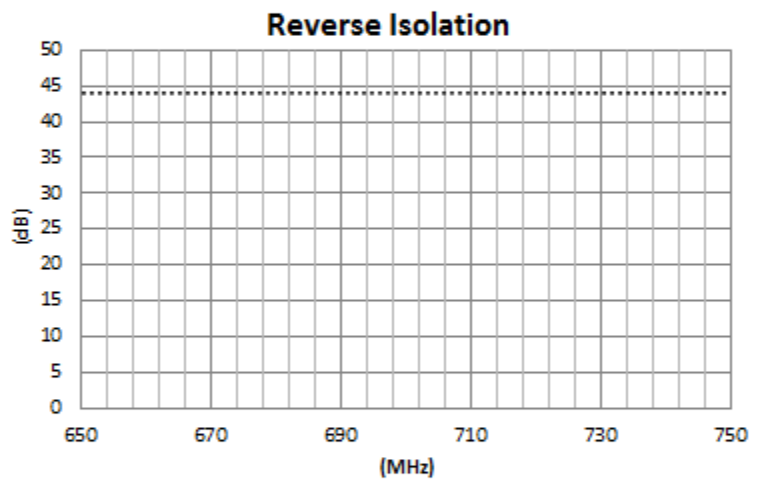
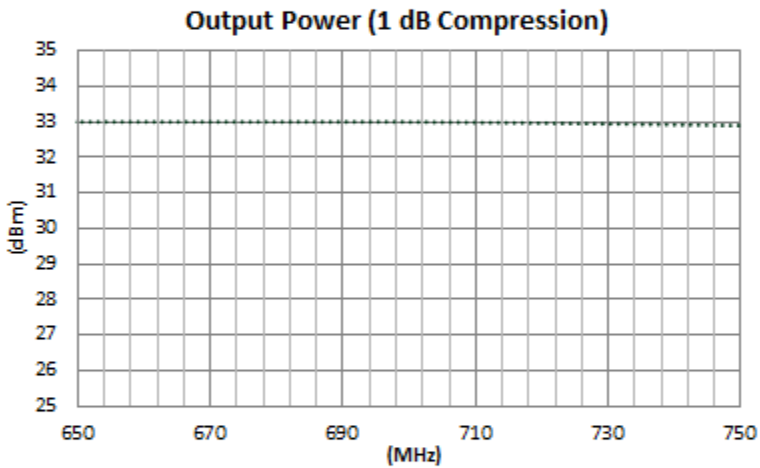
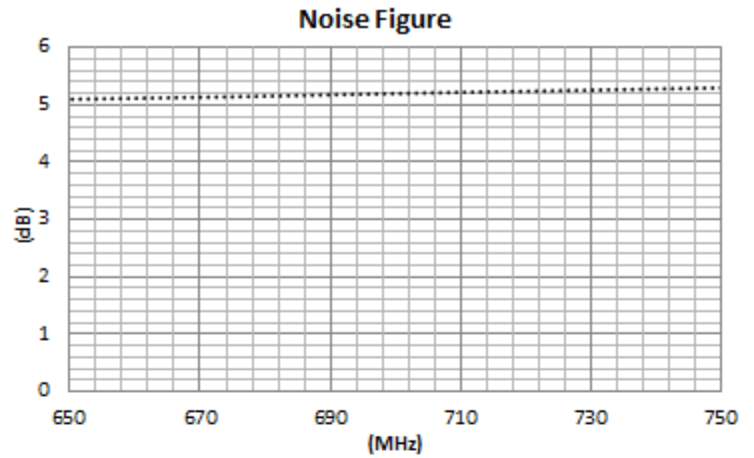
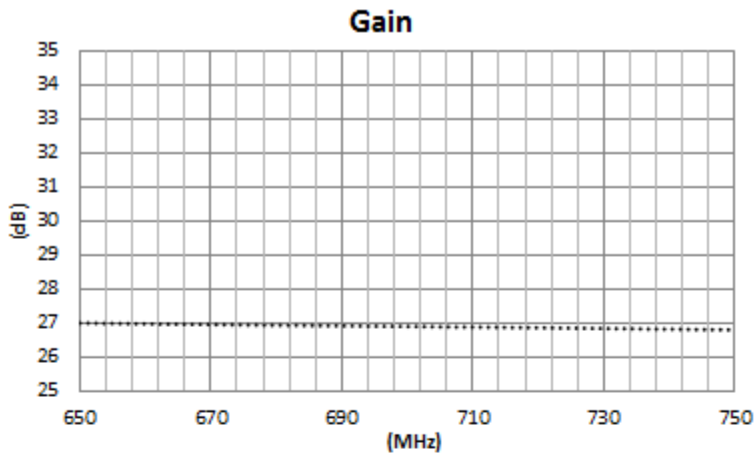
Maximum (No Damage) Ratings	
Storage Temperature	-62°C to +125°C
Operating Temperature	-55°C to +100°C
DC Voltage @ 25°C	+20 volts
Input Drive @ 25°C (CW)	+13 dBm

- Typical values are measured at 25°C, but not guaranteed.
- All specifications noted when measured into a 50 ohm load.
- Intermods Measured at 700 MHz

Mechanical & Electrical

Parameter	Specification
Specification Temperatures (Min/Max)	0°C to +50°C
Housing Size	1.75" L x 1.100" W x 0.52" H
Housing Connectors	SMA Connectorized

Typical Performance Graphs

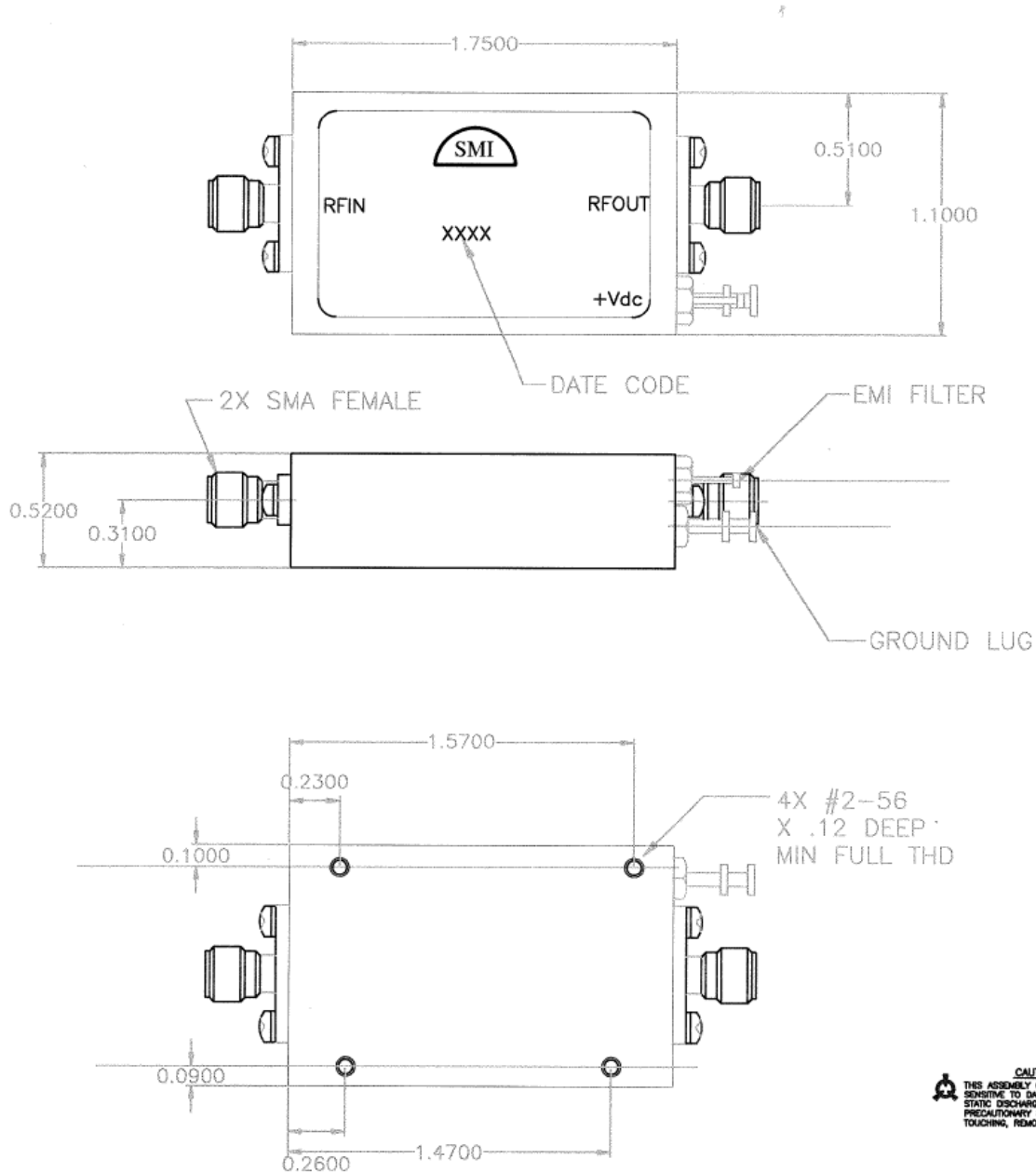


Instructions

Grounding Instructions	Care should be taken to effectively ground each unit.
Revisions	API reserves the right to make revisions to both product and/or the information contained within their datasheets without advanced notice.
Min./Max. Values	Specifications are guaranteed when tested in a 50 Ω (ohm) system.
Typical performance graphs and values are measured at 25°C, but not guaranteed.	

Outline Drawing

(for reference only)



CAUTION
 THIS ASSEMBLY CONTAINS PARTS SENSITIVE TO DAMAGE BY ELECTRO-STATIC DISCHARGE (ESD). USE ESD PRECAUTIONARY PROCEDURES WHEN TOUCHING, REMOVING OR INSERTING.