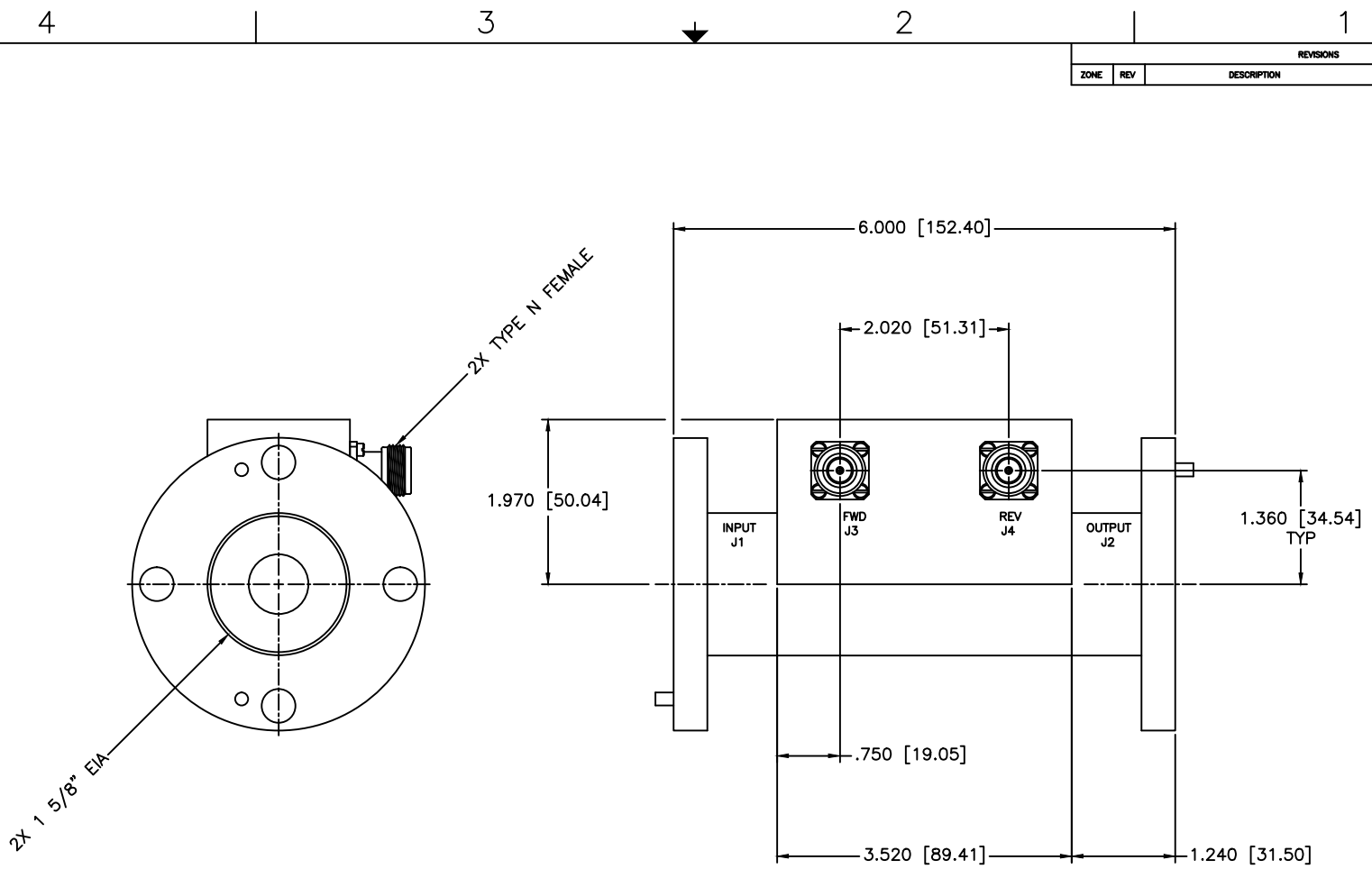


REVISIONS				
ZONE	REV	DESCRIPTION	DATE	APPROVED



SPECIFICATIONS

FREQUENCY RANGE: 2–30 MHz
 FLATNESS: ± 0.25 dB
 INSERTION LOSS: 0.05dB Max.
 DIRECTIVITY: 30dB Min.
 VSWR: 1.10:1 Max.
 POWER: 25kW CW

MATERIAL:			MICROWAVE COMMUNICATIONS LABORATORIES INC. 7255 30TH AVE. N. SAINT PETERSBURG, FL 33710 TEL: (727) 344-6254 FAX: (727) 381-6116 http://www.mcli.com		SCALE: N/A
UNLESS OTHERWISE SPECIFIED: TOLERANCES IN (INCHES) OR [mm] (MILLIMETERS) FRACTIONS: $\pm 1/64$ DECIMALS: $\pm 0.01 \pm 0.005$ ANGLE: $\pm 1/2^\circ$			DRAWING TITLE: HIGH POWER DUAL DIRECTIONAL COUPLER		SHEET: N/A
DRAWN: Paiboon Luethamhan		DATE: 01-04-2011	PART NO. HDL-13-70		DWG NO. 85194
APPROVED: T. Nguyen		DATE: 01-04-2011	CAGE CODE: OD2L5	SIZE: C REV: N/A DO NOT SCALE THE DRAWING	
PROPRIETARY NOTICE: THE INFORMATION IN THIS DRAWING IS PROPRIETARY AND SHALL NOT BE USED OR DISCLOSED WITHOUT WRITTEN PERMISSION FROM MICROWAVE COMMUNICATIONS LABORATORIES INC. (MCLI)					