

## WR-28 Waveguide Power Divider, 2-Way, 30 to 40 GHz

### Description:

**Model SWP-30340302-28-S1** is a Ka band, 2-way power divider with a typical insertion loss of 0.4 dB across the frequency range of 30 to 40 GHz. The divider offers 20 dB isolation and well balanced ports, which can be used for in-phase power dividing or combining. This power divider comes as a right angle configuration with WR-28 waveguides and UG-599/U flanges at the input and all outputs.



### Features:

- Low Insertion Loss
- High Isolation
- Compact Package

### Applications:

- Test Labs
- Test Instrumentation
- Sub-assemblies

### Electrical Specifications:

Parameter	Minimum	Typical	Maximum
Frequency	30 GHz		40 GHz
Amplitude Unbalance		±0.2 dB	
Insertion Loss		0.4 dB	
Port Isolation		20 dB	
Input/ Output Return Loss		10 dB	14 dB
Specification Temperature		+25 °C	
Operating Temperature	-40 °C		+85 °C

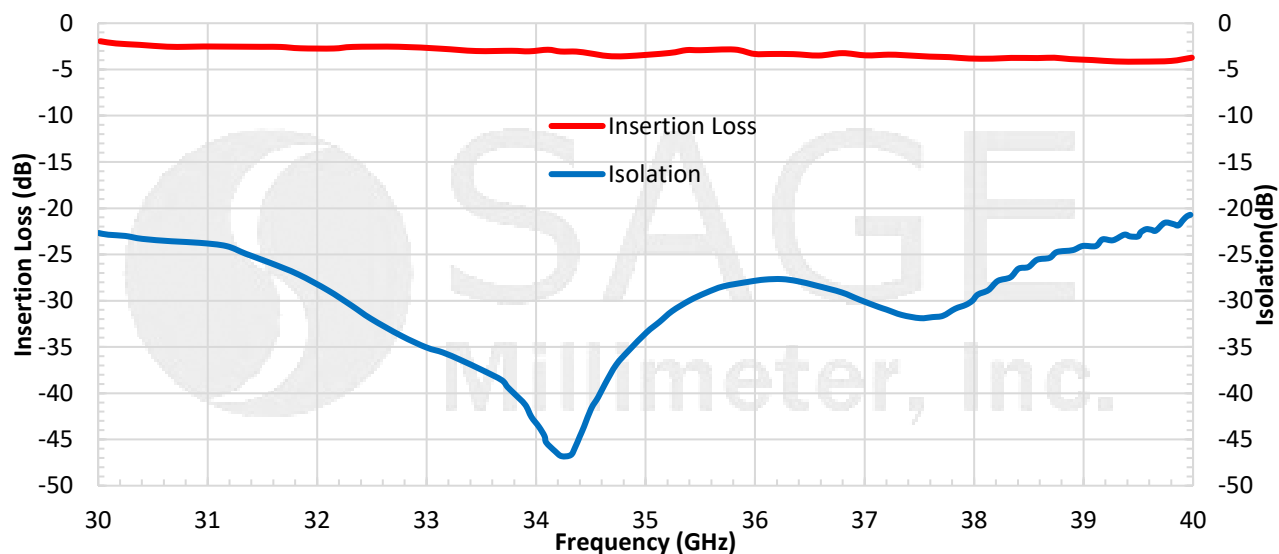
### Mechanical Specifications:

Item	Specification
Input Port	WR-28 Waveguide with UG-599/U Flange
Output Ports	WR-28 Waveguide with UG-599/U Flange
Material	Aluminum
Finish	Gold Plated
Weight	1.3 Oz
Size	1.00" (L) X 1.00" (W) X 0.88" (H)
Outline	WP-A2

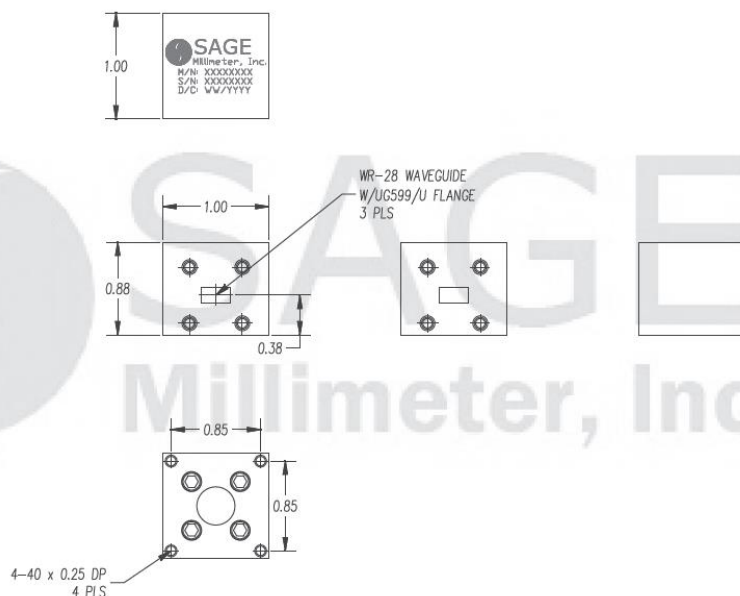


## WR-28 Waveguide Power Divider, 2-Way, 30 to 40 GHz

## Typical Insertion Loss and Isolation vs. Frequency



**Mechanical Outline:** (Unless otherwise specified, all dimensions are in inches)

**Note:**

- All data presented is collected from a sample lot. Actual data may vary unit to unit slightly.
- All testing was performed under +25 °C case temperature.
- SAGE Millimeter, Inc. reserves the right to change the information presented without notice.

**Caution:**

- Any foreign objects in the waveguide will degrade performance and/or damage the device.



www.sagemillimeter.com | 3043 Kashiwa Street, Torrance, CA 90505  
 Phone: 424-757-0168 | Fax: 424-757-0188 | Email: sales@sagemillimeter.com