

Ka-Band Quadrature Mixer or Phase Detector, 30 to 40 GHz

Description:

Model SFQ-30340310-2828SF-N1-M is a Ka Band quadrature mixer that covers the frequency range of 30 to 40 GHz. The typical conversion loss of the quadrature mixer is 10 dB with an LO driving power of +17 dBm. The typical LO to RF port isolation is 30 dB. Since the IF port of the quadrature mixer is DC coupled, the mixer can be used as a phase detector. In addition, the mixer can be readily configured into an image rejection mixer or single sideband modulator by adding an IF quadrature coupler.



Features:

- Compact Package
- Low Conversion Loss
- High Port Isolations
- IF Port DC Coupled for Phase Detection

Applications:

- Phase Detection
- Speed and Ranging Radar Systems
- Communication Systems
- Test Equipment

Electrical Specifications:

Parameter	Minimum	Typical	Maximum
RF Frequency	30 GHz		40 GHz
RF Input P1dB		+4 dBm	
LO Frequency	30 GHz		40 GHz
LO Pumping Power	+16 dBm	+17 dBm	+20 dBm
IF Frequency	DC		5.0 GHz
Conversion Loss		10 dB	12 dB
I/Q Phase Unbalance		±15°	
I/Q Amplitude Unbalance		±1.0 dB	
LO to RF Port Isolation	20 dB	30 dB	
RF to IF Port Isolation		20 dB	
LO to IF Port Isolation		15 dB	
Combined Damage RF & LO Power			+20 dBm
Specification Temperature		+25 °C	
Operating Temperature	0 °C		+50 °C

Mechanical Specifications:

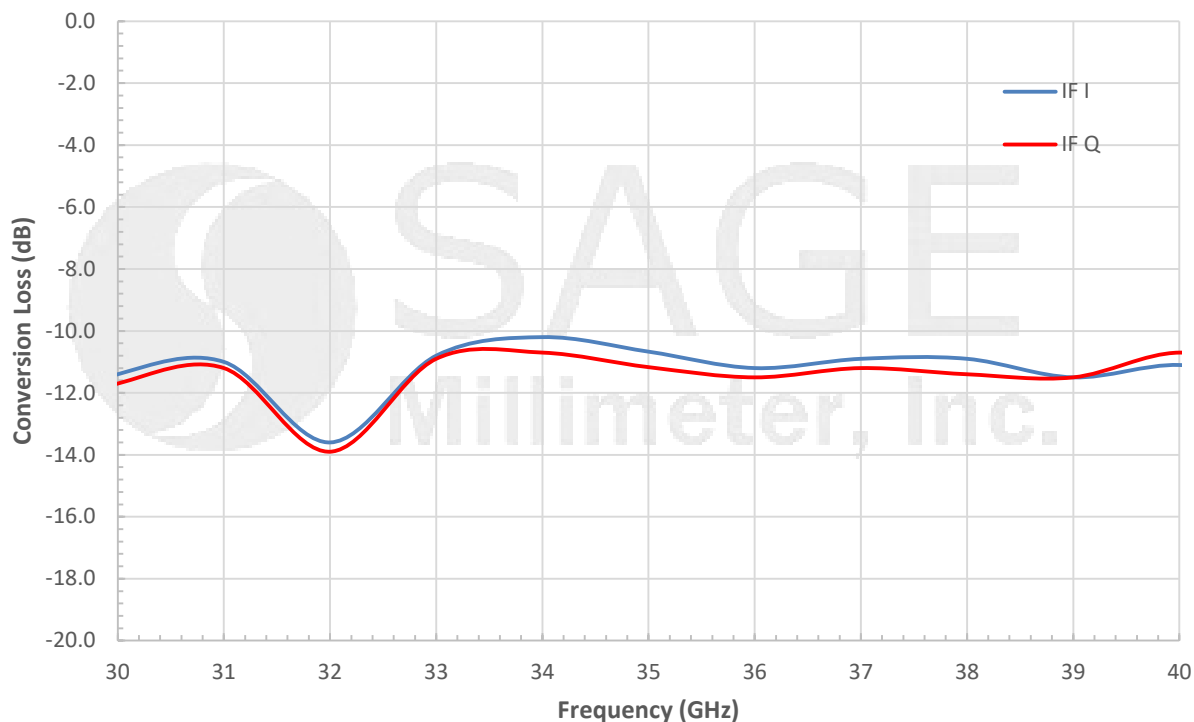
Item	Specification
RF Port	WR-28 Waveguide with UG-599/U Flanges
LO Port	WR-28 Waveguide with UG-599/U Flanges
IF-I, IF-Q Ports	SMA(F)
Case Material	Aluminum
Finish	Gold Plated
Weight	0.68 Oz
Size	0.8" (L) 0.8" (W) X 0.39" (H)
Outline	FQ-NAM



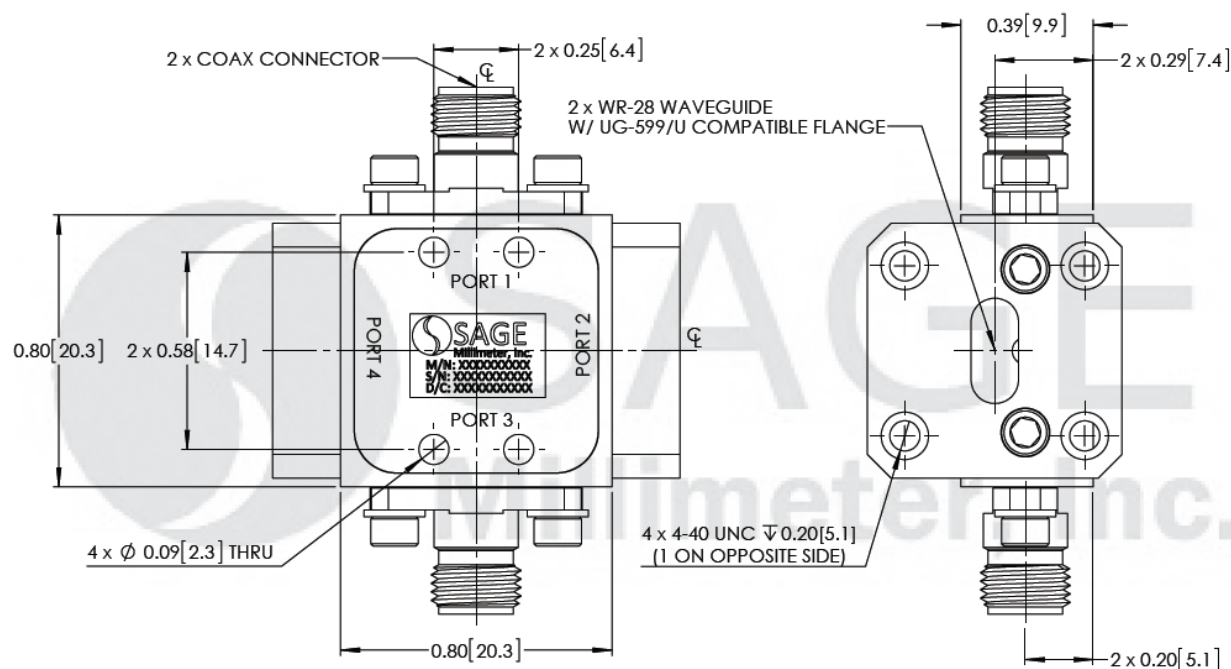
Ka-Band Quadrature Mixer or Phase Detector, 30 to 40 GHz

Typical Conversion Loss vs. Frequency

LO Power: +17 dBm; RF Power: -20 dBm; IF: 1 GHz



Mechanical Outline: (Unless otherwise specified, all dimensions are in inches [millimeters])





Ka-Band Quadrature Mixer or Phase Detector, 30 to 40 GHz

Note:

- All data presented is collected from a sample lot. Actual data may vary unit to unit.
- All testing was performed under +25 °C case temperature.
- The I/Q mixer can be configured as an image rejection mixer or used as an I/Q up-converter, single sideband modulator and phase detector.
- SAGE Millimeter, Inc. reserves the right to change the information presented without notice.

Caution:

- Exceeding absolute maximum ratings will damage the device.
- The mixer is a static sensitive device. Always follow ESD rules when working with the device.
- Any foreign objects in the waveguide will cause performance degradation and possible device damage.
- The IF ports are DC coupled. Use DC blocks if necessary. **Do not apply an external bias voltage to the IF port.**
- Proper torque, 8.0 ± 0.15 inch-pounds (0.92 ± 0.05 Nm), should be applied. **SAGE Millimeter torque wrench, model SCH-08008-S1, is highly recommended.**

