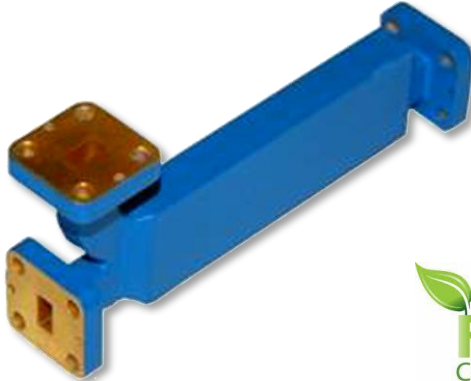




### Waveguide WR28 Directional Coupler 26.5 - 40.4GHz



#### Features

- Wide band operation
- High isolation within operational band
- Low Insertion loss
- Stable performance over temperature
- High peak to average handling capability
- All specifications can be modified upon request

#### Typical Applications

- Aerospace and military applications
- LMDS multi-carrier operation

#### Electrical Specifications, $T_A=25^\circ\text{C}$

Parameters	Min.	Typ.	Max.	Units
Frequency Range	26.5		40.4	GHz
Nominal Coupling		20		dB
Directivity	30			dB
VSWR Primary			1.1	: 1
VSWR Secondary			1.3	: 1
Impedance	50			Ohms
Weight				ounces
Flange Type	Cover			
Material	Brass			
Finish	Blue Paint			

#### Environmental Specifications

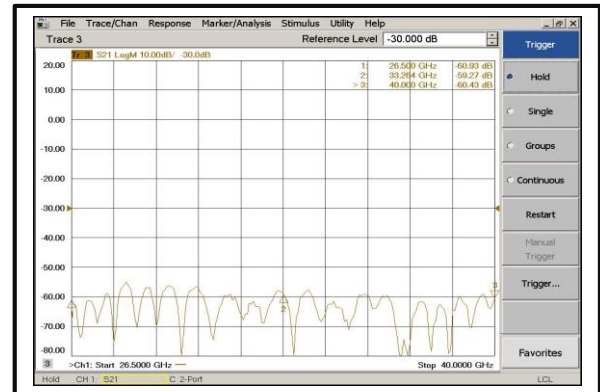
Operational Temperature ( $^\circ\text{C}$ )	-40 ~ +85
Storage Temperature ( $^\circ\text{C}$ )	-60 ~ +125
Altitude	45,000 ft.
Vibration	10g RMS (15 degrees 2KHz) endurance, 1 hour per axis
Humidity	100% RH at 35c, 95%RH at 40 $^\circ\text{C}$
Shock	20G for 11msec half sine wave, 3 axis both directions



### Nominal Coupling

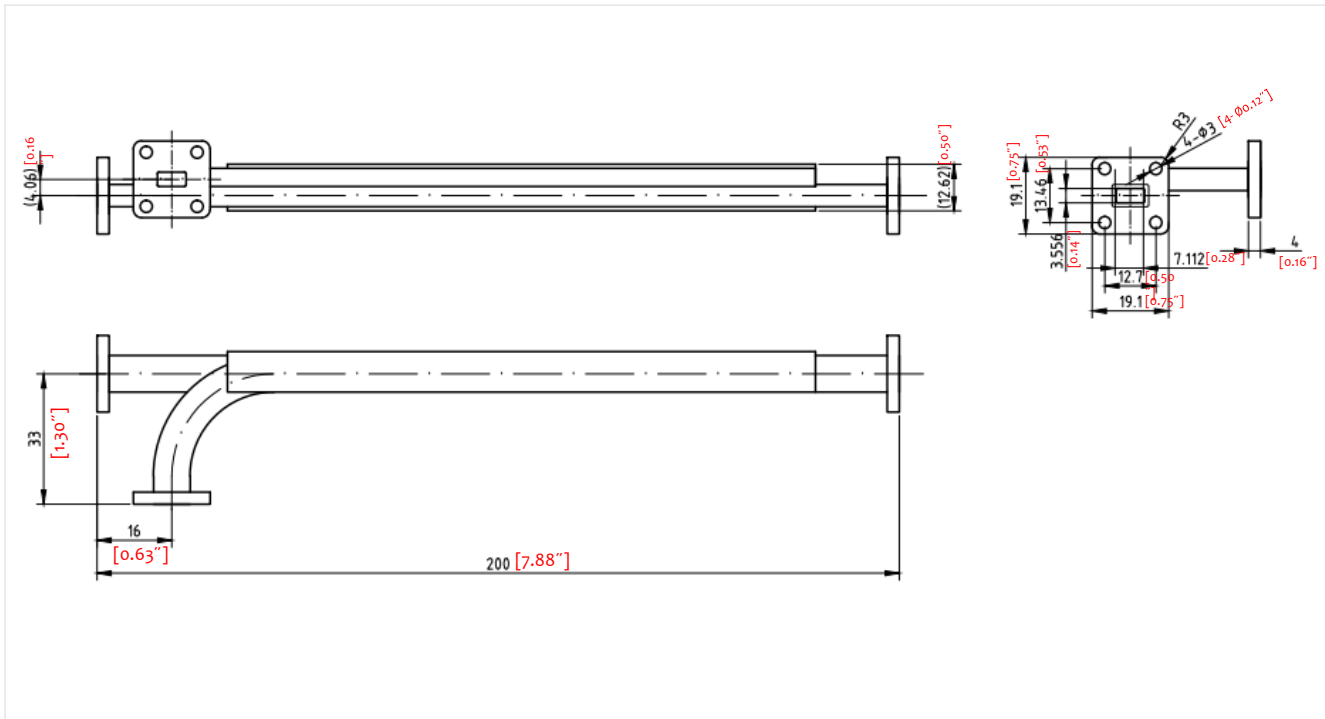


### Directivity



### Outline Drawing:

All Dimensions in mm [inches]



### Important Notice

The information contained herein is believed to be reliable. RF-Lambda makes no warranties regarding the information contained herein. RF-Lambda assumes no responsibility or liability whatsoever for any of the information contained herein. RF-Lambda assumes no responsibility or liability whatsoever for the use of the information contained herein. The information contained herein is provided "AS IS, WHERE IS" and with all faults, and the entire risk associated with such information is entirely with the user. All information contained herein is subject to change without notice. Customers should obtain and verify the latest relevant information before placing orders for RF-Lambda products. The information contained herein or any use of such information does not grant, explicitly or implicitly, to any party any patent rights, licenses, or any other intellectual property rights, whether with regard to such information itself or anything described by such information. RF-Lambda products are not warranted or authorized for use as critical components in medical, life-saving, or life sustaining applications, or other applications where a failure would reasonably be expected to cause severe personal injury or death.