

Coaxial

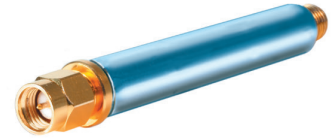
# Low Pass Filter

VLFX-80+

50Ω DC to 80 MHz (40 dB Typ. Isolation up to 20 GHz)

## The Big Deal

- Very good rejection, 40 dB typ. up to 20 GHz
- Excellent power handling, 10W
- Rugged unibody construction



CASE STYLE: FF1118

## Product Overview

VLFX-80+ is a 50Ω low pass filter built in rugged unibody construction. Covering DC-80 MHz bandwidth, these units offer good matching within the passband and high rejection in stopband, 40 dB typ. up to 20 GHz. This will find its applications in harmonic rejection, transmitters / receivers and test instrumentation.

## Key Features

Feature	Advantages
Low passband insertion loss	Suitable for high performance application
Fast roll-off	Provides very good adjacent band rejection
Connectorized package	The connectorized package is easy to interface with other devices and well suited for test setups

### Notes

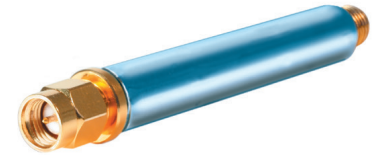
- A. Performance and quality attributes and conditions not expressly stated in this specification document are intended to be excluded and do not form a part of this specification document.  
B. Electrical specifications and performance data contained in this specification document are based on Mini-Circuit's applicable established test performance criteria and measurement instructions.  
C. The parts covered by this specification document are subject to Mini-Circuits standard limited warranty and terms and conditions (collectively, "Standard Terms"); Purchasers of this part are entitled to the rights and benefits contained therein. For a full statement of the Standard Terms and the exclusive rights and remedies thereunder, please visit Mini-Circuits' website at [www.minicircuits.com/MCLStore/terms.jsp](http://www.minicircuits.com/MCLStore/terms.jsp)



# Low Pass Filter

VLFX-80+

50Ω DC to 80 MHz (40 dB Typ. Isolation up to 20 GHz)



CASE STYLE: FF1118

Connectors	Model
SMA	VLFX-80+

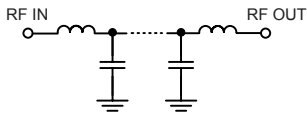
## Features

- Very good isolation, 40 dB typ. up to 20 GHz
- Excellent power handling, 10W
- Temperature stable LTCC internal structure
- Re-entry frequency > 20 GHz
- Protected by US patent 6,943,646
- Rugged unibody construction

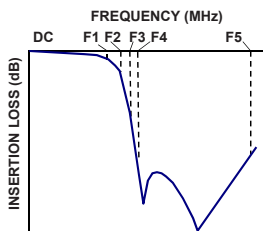
## Applications

- Harmonic rejection
- Transmitters/receivers
- Lab use
- Test instrumentation

## Functional Schematic



## Typical Frequency Response



## Electrical Specifications<sup>(1)</sup> at 25°C

Parameter	F#	Frequency (MHz)	Min.	Typ.	Max.	Unit
Pass Band	Insertion Loss	DC-F1	DC-80	—	1.0	1.6 dB
	Freq. Cut-Off	F2	145	—	3.0	dB
	VSWR	DC-F1	DC-80	—	1.2	:1
Stop Band	Insertion Loss	F3	200	20	27	dB
		F4-F5	220-20000	—	40	dB
	VSWR	F3-F5	220-20000	—	10	:1

(1) In Application where DC voltage is present at either input or output ports, coupling capacitors are required.

## Maximum Ratings

Operating Temperature	-55°C to 100°C
Storage Temperature	-55°C to 100°C
RF Power Input*	10W max.

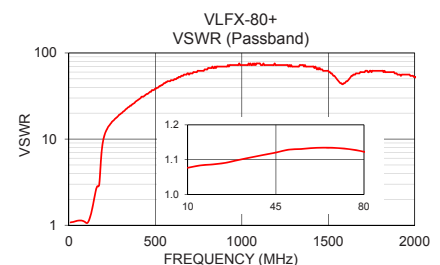
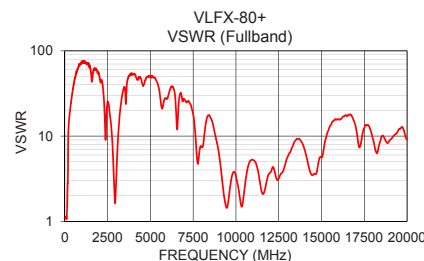
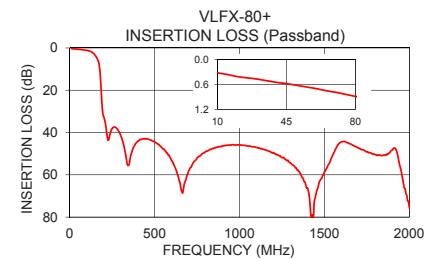
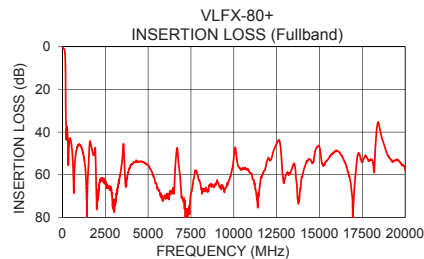
\*Passband rating, derate linearly to 3.5W at 100°C ambient.  
Permanent damage may occur if any of these limits are exceeded.

## Typical Performance Data at 25°C

Frequency (MHz)	Insertion Loss (dB)	VSWR (:1)
10	0.32	1.08
50	0.62	1.13
80	0.89	1.12
100	1.14	1.06
145	2.95	1.97
180	12.84	3.86
185	19.19	5.59
190	26.28	7.38
195	30.92	8.86
200	32.41	10.02
220	41.22	12.99
500	44.46	38.61
1000	45.97	72.39
2500	63.56	25.19
5000	55.49	51.10
10000	52.09	3.41
15000	47.08	5.59
17500	54.07	12.44
18400	35.61	8.27
20000	57.88	9.13

## +RoHS Compliant

The +Suffix identifies RoHS Compliance. See our web site for RoHS Compliance methodologies and qualifications



## Notes

- Performance and quality attributes and conditions not expressly stated in this specification document are intended to be excluded and do not form a part of this specification document.
- Electrical specifications and performance data contained in this specification document are based on Mini-Circuits' applicable established test performance criteria and measurement instructions.
- The parts covered by this specification document are subject to Mini-Circuits standard limited warranty and terms and conditions (collectively, "Standard Terms"); Purchasers of this part are entitled to the rights and benefits contained therein. For a full statement of the Standard Terms and the exclusive rights and remedies thereunder, please visit Mini-Circuits' website at [www.minicircuits.com/MCLStore/terms.jsp](http://www.minicircuits.com/MCLStore/terms.jsp)

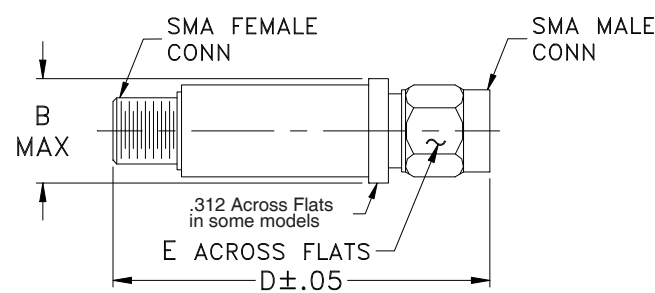


[www.minicircuits.com](http://www.minicircuits.com) P.O. Box 350166, Brooklyn, NY 11235-0003 (718) 934-4500 [sales@minicircuits.com](mailto:sales@minicircuits.com)

Coaxial Connections

INPUT	SMA-Male
OUTPUT	SMA-Female

Outline Drawing



Outline Dimensions ( <sup>inch</sup><sub>mm</sub> )

B	D	E	wt.
.410	2.67	.312	grams
10.41	67.82	7.92	17.0

Notes

A. Performance and quality attributes and conditions not expressly stated in this specification document are intended to be excluded and do not form a part of this specification document.

B. Electrical specifications and performance data contained in this specification document are based on Mini-Circuit's applicable established test performance criteria and measurement instructions.

C. The parts covered by this specification document are subject to Mini-Circuits standard limited warranty and terms and conditions (collectively, "Standard Terms"); Purchasers of this part are entitled to the rights and benefits contained therein. For a full statement of the Standard Terms and the exclusive rights and remedies thereunder, please visit Mini-Circuits' website at [www.minicircuits.com/MCLStore/terms.jsp](http://www.minicircuits.com/MCLStore/terms.jsp)