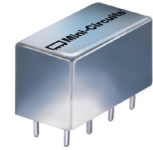


Plug-In

Power Splitter/Combiner

PSC-3-13+

3 Way-0° 50Ω 1 to 200 MHz



CASE STYLE: A01

Maximum Ratings

Operating Temperature	-55°C to 100°C
Storage Temperature	-55°C to 100°C
Power Input (as a splitter)	1W max.
Internal Dissipation	0.375W max.
Permanent damage may occur if any of these limits are exceeded.	

Pin Connections

SUM PORT	6
PORT 1	1
PORT 2	2
PORT 3	5
GROUND	3,4,7,8
CASE GROUND	3,4,7,8

Features

- low insertion loss, 0.35 dB typ.
- high isolation, 45 dB typ.
- rugged welded construction

Applications

- HF/VHF
- amateur radio
- federal & defense communication

+RoHS Compliant

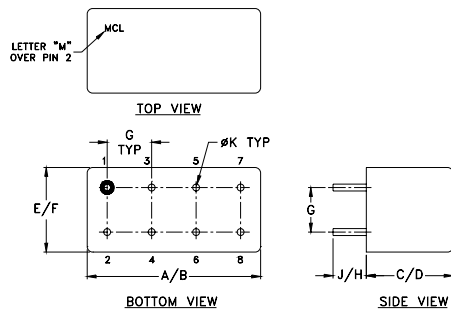
The +Suffix identifies RoHS Compliance. See our web site for RoHS Compliance methodologies and qualifications

Electrical Specifications

FREQ. RANGE (MHz)	ISOLATION (dB)						INSERTION LOSS (dB) ABOVE 4.8 dB						PHASE UNBALANCE (Degrees)			AMPLITUDE UNBALANCE (dB)		
	L		M		U		L		M		U		L	M	U	L	M	U
	Typ.	Min	Typ.	Min	Typ.	Min	Typ.	Max.	Typ.	Max.	Typ.	Max.	Max.	Max.	Max.	Max.	Max.	Max.
f_L - f_U																		
1-200	45	35	45	30	37	30	0.25	0.5	0.35	0.6	0.35	0.8	1	3	4	0.1	0.2	0.2

L = low range [f_L to 10 f_L] M = mid range [10 f_L to $f_U/2$] U = upper range [$f_U/2$ to f_U]

Outline Drawing



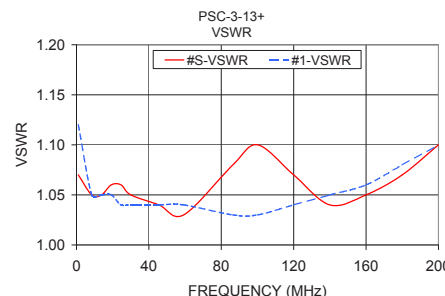
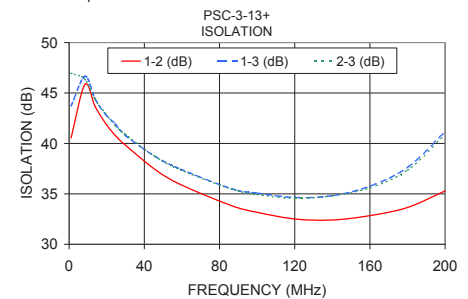
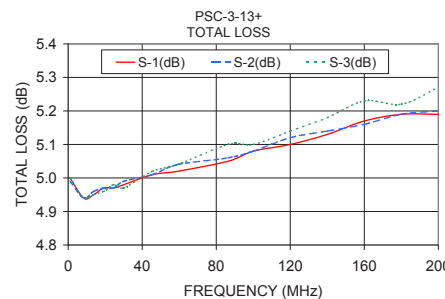
Outline Dimensions (inch/mm)

A	B	C	D	E	F
.770	.800	.385	.400	.370	.400
19.56	20.32	9.78	10.16	9.40	10.16
G	H	J	K	wt	
.200	.20	.14	.031	grams	
5.08	5.08	3.56	0.79	5.2	

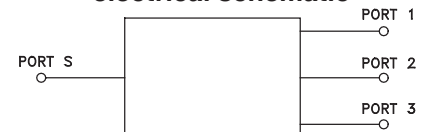
Typical Performance Data

Freq. (MHz)	Total Loss ¹ (dB)			Amp. Unbal. (dB)	Isolation (dB)			Phase Unbal. (deg.)	VSWR S	VSWR 1	VSWR 2	VSWR 3
	S-1	S-2	S-3		1-2	1-3	2-3					
1.00	5.00	4.99	5.00	0.01	40.54	43.71	46.96	0.06	1.07	1.12	1.11	1.10
8.40	4.94	4.94	4.94	0.01	45.84	46.65	46.37	0.16	1.05	1.05	1.05	1.05
13.80	4.95	4.96	4.95	0.01	43.67	44.42	44.35	0.12	1.05	1.05	1.04	1.04
19.20	4.97	4.97	4.96	0.01	42.04	42.91	43.02	0.07	1.06	1.05	1.04	1.04
24.60	4.97	4.97	4.98	0.01	40.78	41.92	41.75	0.18	1.06	1.04	1.04	1.04
30.00	4.98	4.99	4.97	0.02	39.82	40.78	40.89	0.32	1.05	1.04	1.04	1.04
45.60	5.01	5.01	5.02	0.01	37.43	38.73	38.71	0.38	1.04	1.04	1.03	1.03
59.20	5.02	5.04	5.04	0.02	35.93	37.46	37.38	0.29	1.03	1.04	1.03	1.03
86.40	5.05	5.06	5.10	0.05	33.83	35.51	35.47	0.47	1.08	1.03	1.02	1.03
100.00	5.08	5.08	5.10	0.01	33.17	35.08	34.94	0.82	1.10	1.03	1.02	1.03
120.00	5.10	5.12	5.14	0.04	32.51	34.64	34.57	0.69	1.07	1.04	1.02	1.04
140.00	5.13	5.14	5.18	0.05	32.41	34.82	34.81	0.99	1.04	1.05	1.03	1.05
160.00	5.17	5.16	5.23	0.07	32.84	35.77	35.61	0.77	1.05	1.06	1.05	1.07
180.00	5.19	5.19	5.22	0.03	33.65	37.63	37.35	1.06	1.07	1.08	1.06	1.09
200.00	5.19	5.20	5.27	0.07	35.29	41.15	40.89	0.99	1.10	1.10	1.08	1.11

1. Total Loss = Insertion Loss + 4.8dB splitter loss.



electrical schematic



Notes

- Performance and quality attributes and conditions not expressly stated in this specification document are intended to be excluded and do not form a part of this specification document.
- Electrical specifications and performance data contained in this specification document are based on Mini-Circuit's applicable established test performance criteria and measurement instructions.
- The parts covered by this specification document are subject to Mini-Circuits standard limited warranty and terms and conditions (collectively, "Standard Terms"); Purchasers of this part are entitled to the rights and benefits contained therein. For a full statement of the Standard Terms and the exclusive rights and remedies thereunder, please visit Mini-Circuits' website at www.minicircuits.com/MCLStore/terms.jsp

REV. D
M151107
PSC-3-13+
HY/TD/CP/AM
151001

