

Ceramic Low Pass Filter

50Ω

DC to 1200 MHz

LFCN-1200D+



CASE STYLE: FV1206

Maximum Ratings

Operating Temperature	-55°C to 100°C
Storage Temperature	-55°C to 100°C
RF Power Input*	10W max. at 25°C
Max. DC Voltage at pins 1&3	25 VDC
DC Current Input to Output	0.5A max. at 25°C

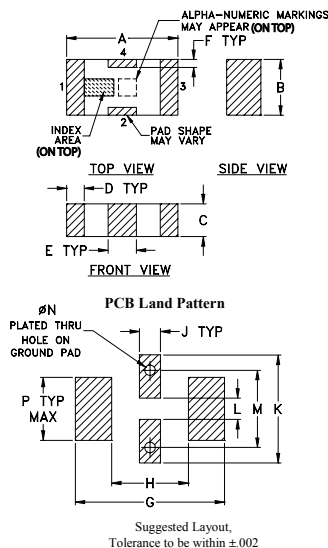
* Derate linearly to 3.5W at 100°C ambient.
Permanent damage may occur if any of these limits are exceeded.

Pin Connections

RF IN	1
RF OUT	3
GROUND	2,4

Product Marking: EL

Outline Drawing

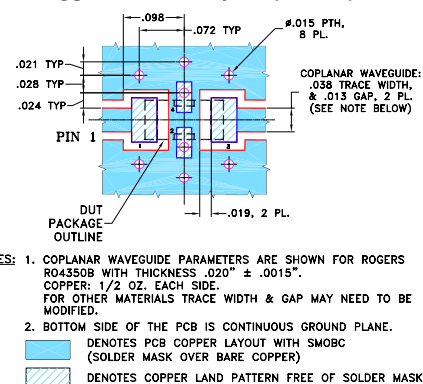


Outline Dimensions (inch)

A	B	C	D	E	F	G
.126	.063	.037	.020	.032	.009	.169
3.20	1.60	0.94	0.51	0.81	0.23	4.29

H	J	K	L	M	N	P	wt
.087	.024	.122	.024	.087	.012	.071	grams
2.21	0.61	3.10	0.61	2.21	0.30	1.80	.020

Demo Board MCL P/N: TB-270 Suggested PCB Layout (PL-137)



Notes

- A. Performance and quality attributes and conditions not expressly stated in this specification document are intended to be excluded and do not form a part of this specification document.
- B. Electrical specifications and performance data contained in this specification document are based on Mini-Circuit's applicable established test performance criteria and measurement instructions.
- C. The parts covered by this specification document are subject to Mini-Circuits standard limited warranty and terms and conditions (collectively, "Standard Terms"); Purchasers of this part are entitled to the rights and benefits contained therein. For a full statement of the Standard Terms and the exclusive rights and remedies thereunder, please visit Mini-Circuits' website at www.minicircuits.com/MCLStore/terms.jsp

Features

- excellent power handling, 10W
- small size
- 7 sections
- temperature stable
- LTCC construction
- protected by U.S. Patent 6,943,646

Applications

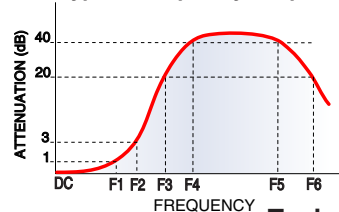
- harmonic rejection
- VHF/UHF transmitters/receivers
- lab use

Electrical Specifications^{1,2} at 25°C

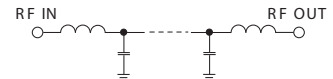
Parameter	F#	Frequency (MHz)	Min.	Typ.	Max.	Unit
Pass Band	Insertion Loss	DC-F1	DC-1200	—	—	1.0 dB
	Freq. Cut-Off	F2	1530	—	3.0	dB
	VSWR	DC-F1	DC-1200	—	1.2	:1
Stop Band	Rejection Loss	F3	1865	20	—	dB
		F4-F5	2000-5000	—	30	dB
		F6	6200	—	20	dB
	VSWR	F3-F6	1865-6200	—	20	:1

- (1) DC Resistance to ground is 100 Mohms min.
- (2) Measured on Mini-Circuits Characterization Test Board TB-270.

Typical Frequency Response



Electrical Schematic



Typical Performance Data at 25°C

Frequency (MHz)	Insertion Loss (dB)	VSWR (:1)
1.00	0.05	1.01
1000.00	0.49	1.09
1200.00	0.69	1.19
1300.00	0.89	1.29
1400.00	1.25	1.43
1500.00	2.10	1.71
1580.00	3.95	2.39
1630.00	6.44	3.38
1680.00	10.39	4.99
1730.00	15.56	6.97
1780.00	21.20	8.86
1850.00	27.39	11.09
4000.00	44.47	38.61
5000.00	40.17	39.49
6900.00	11.93	14.74

