

Coaxial High Power Amplifier

ZVE-3W-83+

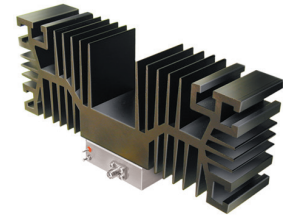
50Ω 3W 2000 to 8000 MHz

Features

- High power, 3 Watt
- Wideband, 2000 to 8000 MHz
- Low noise figure, 5.8 dB typ.
- High IP3, +42 dBm typ.
- High dynamic range
- High gain, 35 dB typ. and good directivity, 35 dB typ.
- Internal voltage regulated for 13 to 18 VDC

Applications

- Satellite communications
- Line-of-sight transmitters
- Signal generators
- Spread-spectrum communication



CASE STYLE: BN1327

Connectors	Model
SMA	ZVE-3W-83+

+RoHS Compliant

The +Suffix identifies RoHS Compliance. See our web site for RoHS Compliance methodologies and qualifications

Electrical Specifications

Parameter	Min.	Typ.	Max.	Units
Frequency Range	2000		8000	MHz
Gain	30		40	dB
Gain Flatness		±1.15	±2.0	dB
Output Power at 1dB compression ¹	+31.5	+33		dBm
Saturated Output Power at 3dB compression ¹	+33.5	+35		dBm
Noise Figure		5.8		dB
Output third order intercept point		+42		dBm
Input VSWR		1.5		:1
Output VSWR		1.4		:1
DC Supply Voltage		15		V
Supply Current ²			1.5	A

1. At 25°C operating temperature

2. IF Voltage set below 15 VDC, current may go up to 2A/max.

Maximum Ratings⁵

Parameter	Ratings
Operating Base Plate Temperature ³	-40°C to 85°C
Storage Temperature	-55°C to 125°C
DC Voltage	+18V
Input RF Power ⁴ (no damage)	+20 dBm

3. Base plate is interface of amplifier body to heat sink.

4. With no load derate max. input power by 20 dB.

5. Permanent damage may occur if any of these limits are exceeded.

Notes

A. Performance and quality attributes and conditions not expressly stated in this specification document are intended to be excluded and do not form a part of this specification document.

B. Electrical specifications and performance data contained in this specification document are based on Mini-Circuit's applicable established test performance criteria and measurement instructions.

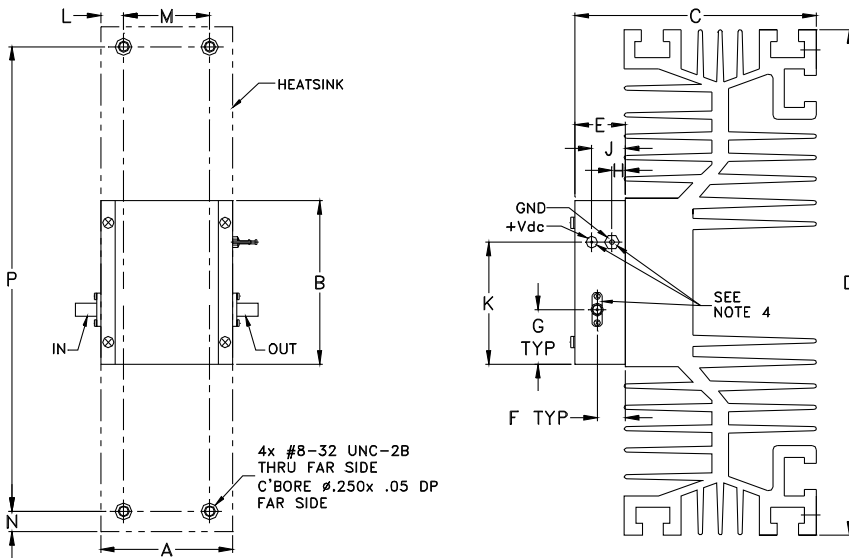
C. The parts covered by this specification document are subject to Mini-Circuits standard limited warranty and terms and conditions (collectively, "Standard Terms"); Purchasers of this part are entitled to the rights and benefits contained therein. For a full statement of the Standard Terms and the exclusive rights and remedies thereunder, please visit Mini-Circuits' website at www.minicircuits.com/WCLStore/terms.jsp



www.minicircuits.com P.O. Box 350166, Brooklyn, NY 11235-0003 (718) 934-4500 sales@minicircuits.com

REV. G
M170526
ZVE-3W-83+
ED-13284/1
WZ/CP/AM
181011
Page 1 of 3

Outline Drawing



Outline Dimensions ^(inch)_(mm)

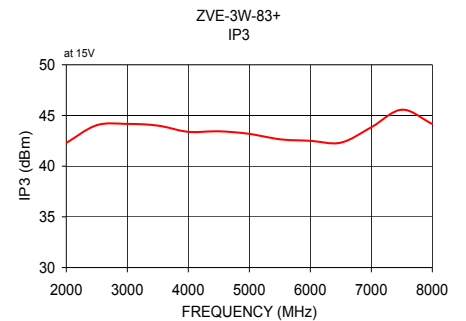
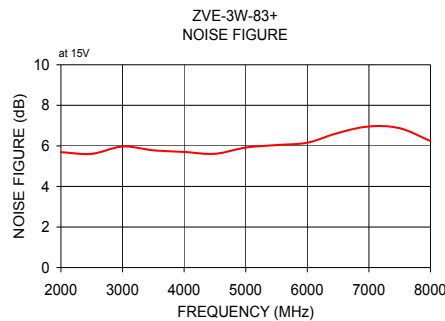
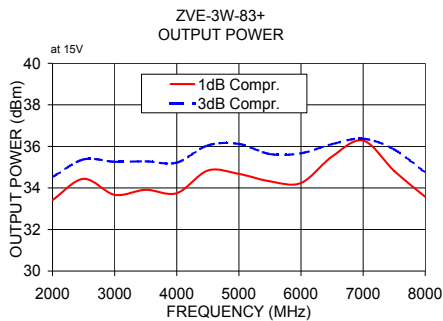
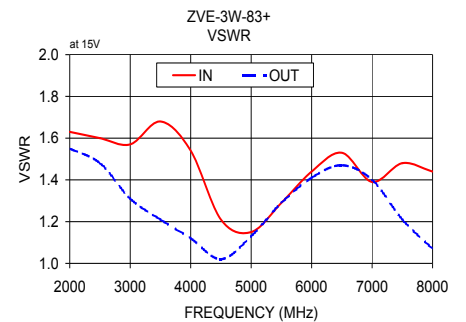
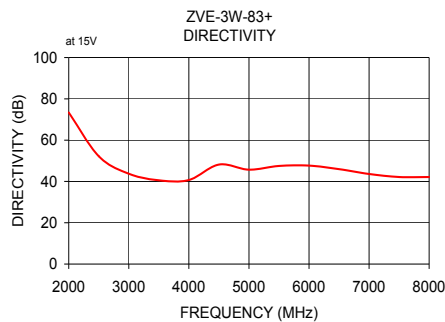
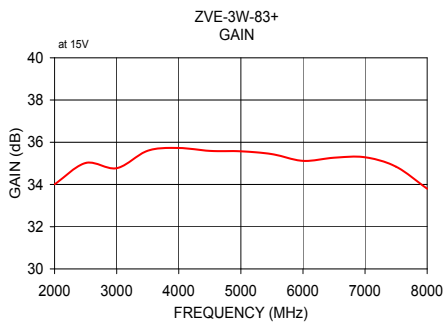
A	B	C	D	E	F	G	H	J	K	L	M	N	P	wt
1.960	2.430	3.6	7.5	.74	.42	.81	.20	.49	1.81	0.355	1.250	.30	6.900	grams
49.78	61.72	91.44	190.50	18.80	10.67	20.57	5.08	12.45	45.97	9.02	31.75	7.62	175.26	875

Notes

- A. Performance and quality attributes and conditions not expressly stated in this specification document are intended to be excluded and do not form a part of this specification document.
- B. Electrical specifications and performance data contained in this specification document are based on Mini-Circuit's applicable established test performance criteria and measurement instructions.
- C. The parts covered by this specification document are subject to Mini-Circuits standard limited warranty and terms and conditions (collectively, "Standard Terms"); Purchasers of this part are entitled to the rights and benefits contained therein. For a full statement of the Standard Terms and the exclusive rights and remedies thereunder, please visit Mini-Circuits' website at www.minicircuits.com/MCLStore/terms.jsp



FREQUENCY (MHz)	GAIN (dB)	DIRECTIVITY (dB)	VSWR (:1)		NOISE FIGURE (dB)	POUT (dBm) at 15V		OUTPUT IP3 (dBm)
	15V	15V	IN	OUT		1 dB Compr.	3 dB Compr.	15V
2000.00	34.01	73.37	1.63	1.55	5.69	33.42	34.53	42.30
2500.00	35.02	52.19	1.60	1.48	5.61	34.44	35.37	44.04
3000.00	34.77	43.74	1.57	1.31	5.97	33.67	35.26	44.17
3500.00	35.60	40.56	1.68	1.21	5.78	33.91	35.28	44.00
4000.00	35.73	40.67	1.54	1.12	5.70	33.75	35.22	43.39
4500.00	35.59	48.18	1.21	1.02	5.61	34.84	36.05	43.44
5000.00	35.57	45.70	1.15	1.13	5.92	34.68	36.12	43.19
5500.00	35.44	47.51	1.29	1.29	6.04	34.32	35.63	42.65
6000.00	35.12	47.69	1.44	1.41	6.16	34.24	35.67	42.50
6500.00	35.27	45.95	1.53	1.47	6.64	35.51	36.11	42.32
7000.00	35.29	43.62	1.39	1.40	6.96	36.28	36.37	43.84
7500.00	34.84	42.16	1.48	1.21	6.87	34.82	35.85	45.57
8000.00	33.80	42.17	1.44	1.07	6.24	33.57	34.75	44.16



Notes

- A. Performance and quality attributes and conditions not expressly stated in this specification document are intended to be excluded and do not form a part of this specification document.
- B. Electrical specifications and performance data contained in this specification document are based on Mini-Circuit's applicable established test performance criteria and measurement instructions.
- C. The parts covered by this specification document are subject to Mini-Circuits standard limited warranty and terms and conditions (collectively, "Standard Terms"); Purchasers of this part are entitled to the rights and benefits contained therein. For a full statement of the Standard Terms and the exclusive rights and remedies thereunder, please visit Mini-Circuits' website at www.minicircuits.com/MCLStore/terms.jsp

