

Coaxial

Precision Fixed Attenuator

BW-KM-2W44+ Series

50Ω 2W 3,6,10,20 dB DC to 40 GHz

The Big Deal

- Extremely wideband, DC to 40 GHz
- 2.92 mm Male connectors
- Outstanding attenuation flatness
- Excellent VSWR, 1.10:1 typ.



CASE STYLE: FF2607

Product Overview

The BW-KMx-2W44+ series of precision fixed attenuators achieves extremely wide frequency range with excellent flatness of attenuation. Available in a variety of attention values for different requirements, these units support a broad range of system and testing applications. Precise performance, excellent VSWR (1.10:1 typ.) and rugged construction make these models ideal solutions for systems requiring precise attenuation across very wide frequency range.

Key Features

Feature	Advantages
Extremely wideband, DC to 40 GHz	Ideal for an exceptionally wide variety of applications.
Excellent VSWR, 1.10:1 typ.	Efficient power utilization with low power reflected back to source.
Outstanding attenuation flatness	Provides precise, consistent attenuation across the entire frequency band, ideal for broadband and multi-band usage.
Passivated stainless steel connectors	Rugged construction withstands harsh environmental conditions for high reliability and long life of use.

Notes

- A. Performance and quality attributes and conditions not expressly stated in this specification document are intended to be excluded and do not form a part of this specification document.
B. Electrical specifications and performance data contained in this specification document are based on Mini-Circuit's applicable established test performance criteria and measurement instructions.
C. The parts covered by this specification document are subject to Mini-Circuits standard limited warranty and terms and conditions (collectively, "Standard Terms"); Purchasers of this part are entitled to the rights and benefits contained therein. For a full statement of the Standard Terms and the exclusive rights and remedies thereunder, please visit Mini-Circuits' website at www.minicircuits.com/MCLStore/terms.jsp



Coaxial Precision Fixed Attenuator

BW-KM6-2W44+

50Ω 2W 6dB DC to 40 GHz



CASE STYLE: FF2607

Connectors	Model
2.92mm Male	BW-KM6-2W44+

+RoHS Compliant

The +Suffix identifies RoHS Compliance. See our web site for RoHS Compliance methodologies and qualifications

Maximum Ratings

Operating Temperature -55°C to 100°C**

Storage Temperature -55°C to 100°C

**with mated connectors. Unmated, 85°C max.

Permanent damage may occur if any of these limits are exceeded.

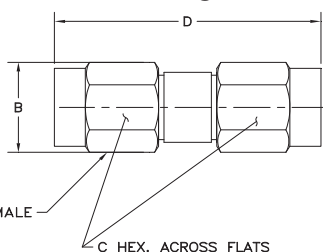
Features

- DC to 40 GHz
- precise attenuation
- excellent VSWR, 1.10:1 typ.
- passivated stainless steel connectors
- can interface with SMA, K & 3.5mm connectors

Applications

- matching
- instrumentation
- test set-ups

Outline Drawing



2X 2.92 MM MALE

C HEX. ACROSS FLATS

Outline Dimensions (inch/mm)

A	B	C	D	E	wt
--	.36	.312	.91	--	grams
--	9.14	7.92	23.11	--	6.5 Max.

Electrical Specifications at 25°C

Parameter	Condition (GHz)	Min.	Typ.	Max.	Unit
Frequency Range		DC	—	40	GHz
Attenuation¹	DC - 40	—	6	—	dB
	DC - 26.5	5	—	7	
	26.5 - 40	5	—	7	
VSWR	DC - 18	—	1.1	1.4	:1
	18 - 26.5	—	1.1	1.5	
	26.5 - 40	—	1.1	1.5	
Input Power²	DC - 40	—	—	2	W

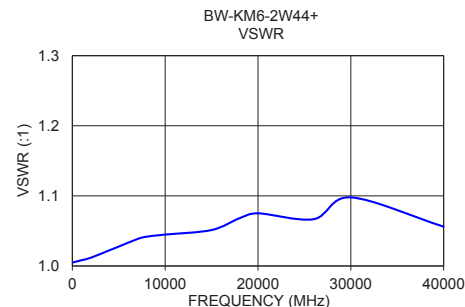
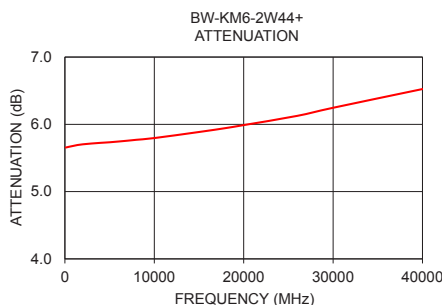
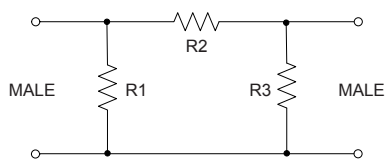
1. At 25°C, accuracy includes frequency and power variations. Temperature coefficient for attenuation: .0004dB/dB/°C typ.

2. Max. power at 25°C ambient, derate linearly to 0.65W at 100°C.

Typical Performance Data

Frequency (MHz)	Attenuation (dB)	VSWR (:1)
100	5.66	1.01
1000	5.68	1.01
2000	5.70	1.01
4000	5.73	1.02
5000	5.73	1.03
7000	5.76	1.04
8000	5.77	1.04
10000	5.80	1.04
15000	5.89	1.05
18000	5.94	1.07
20000	5.99	1.08
26000	6.13	1.07
30000	6.25	1.10
40000	6.52	1.06

Simplified Electrical Schematic



Notes

A. Performance and quality attributes and conditions not expressly stated in this specification document are intended to be excluded and do not form a part of this specification document.

B. Electrical specifications and performance data contained in this specification document are based on Mini-Circuit's applicable established test performance criteria and measurement instructions.

C. The parts covered by this specification document are subject to Mini-Circuits standard limited warranty and terms and conditions (collectively, "Standard Terms"); Purchasers of this part are entitled to the rights and benefits contained therein. For a full statement of the Standard Terms and the exclusive rights and remedies thereunder, please visit Mini-Circuits' website at www.minicircuits.com/MCLStore/terms.jsp



www.minicircuits.com P.O. Box 350166, Brooklyn, NY 11235-0003 (718) 934-4500 sales@minicircuits.com

REV. OR
M168702
BW-KM6-2W44+
WP/CP/AM
180628
Page 2 of 2